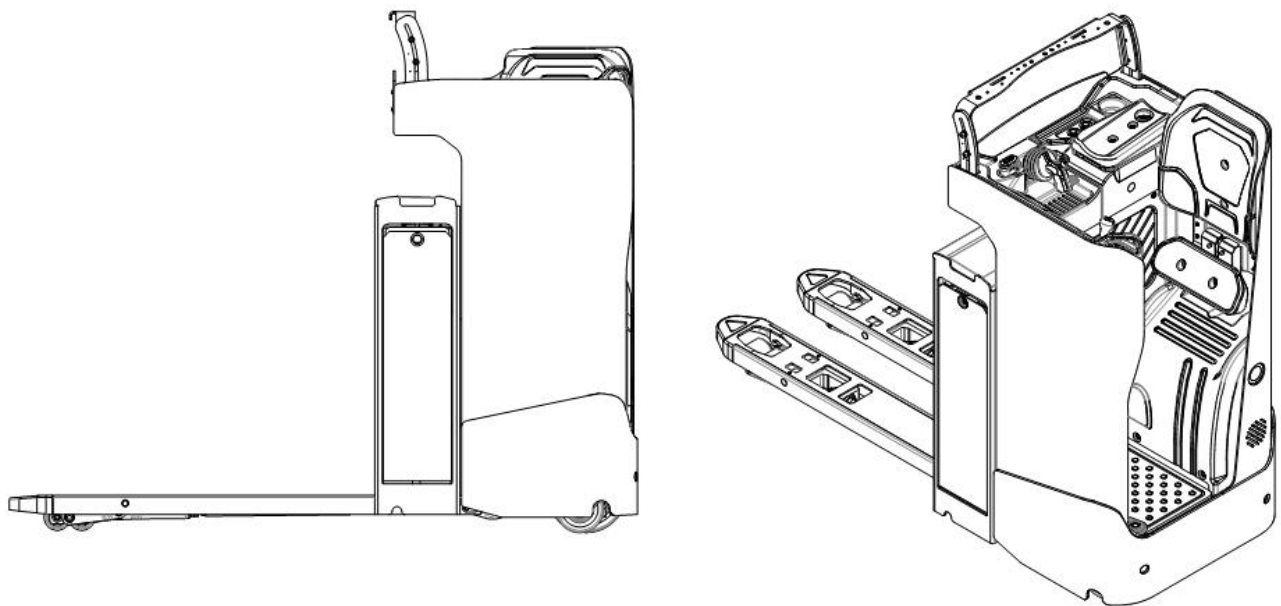


Electric Pallet Truck

PRS-200

PARTS MANUAL

511546010101



Version: V03

From truck identification number:

Parts Manual

PRS-200-PM03EN

Please order spare parts from an authorized dealer of Manufacturer.

In order to avoid wrong shipping, all the orders of parts should be marked with the following items:

- Truck model, manufacturing number and year of manufacture.
- When ordering spare parts for mast, hydraulic parts, steer bridge and motor, the manufacturing number shall be noted.
- The article number for spare parts of Manufacturer are shown in the spare parts list. Please also pay attention to the mark of supply status and order quantity, etc. (the number listed in "Mark" column of the spare parts list).

"Mark" column:

The unmarked number indicates the lead time for these parts is short.

Number 1: Supply as package. Indicating that supply the small parts or sealing parts as packages, with its minimum quantity for each package, the lead time for these spare parts is short.

Number 2: Supply with limit. Indicating that these parts are not in stock and will be prepared for production after receiving the order from the customer. The lead time may be long.

Number 3: Phasing out supply. Indicating that due to technical improvements, these parts are replaced by new parts and will not be supplied after current stock run out. Please check the corresponding explanations.

Number 4: Supply as assembly. Indicating that these parts are assembly parts specified by the manufacturing process, which cannot be supplied as single part.

Number 5: Check other lists. This list is the property of Manufacturer and can be shared under the confidential agreement only, Manufacturer has the right to claim for compensation. Copy is not allowed without the permission of Manufacturer. The figures are not limited by the original design structure. Manufacturer Intelligent Equipment Co., LTD reserves the right to improve the products to adapt to the continuous progress of technology.

Table of Contents

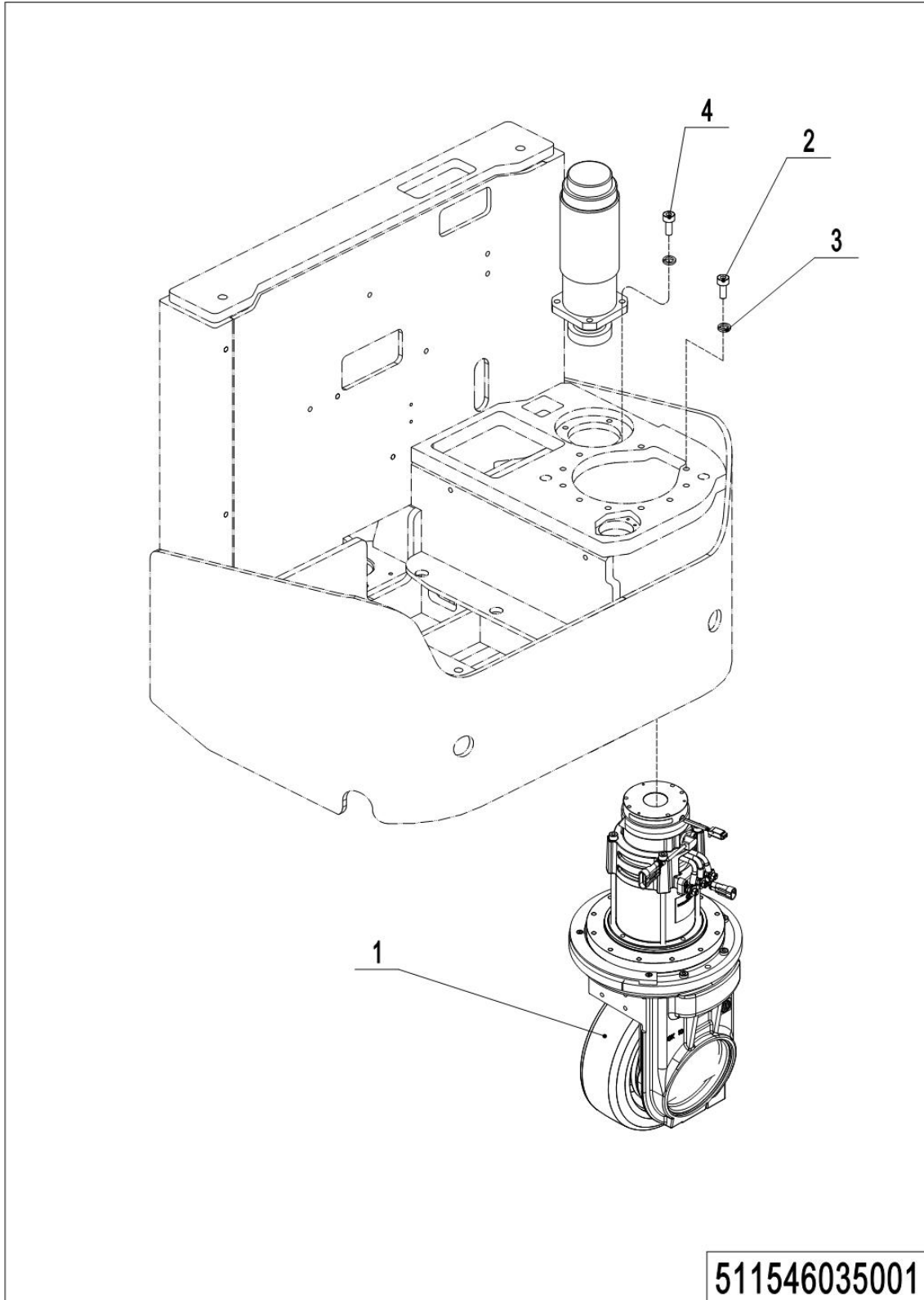
Chapter 1: Drive system	5
01 Drive unit (511546035001).....	5
02 Traction and Steering Assembly (511546035002).....	7
03 Electronic Steering Assembly (511546031501).....	9
Chapter 2: Hydraulic System.....	11
01 Hydraulic Assembly (511546023501)	11
02 Hydraulic Unit (506946024002).....	13
Chapter 3: Truck Structure.....	15
01 Chassis (511546021501).....	15
02 Operator Platform (511546022501).....	17
02 Operator Platform (511546022501) Continuation	19
03 Fork Carriage Assembly (511546038501).....	21
03 Fork Carriage Assembly (511546038501) Continuation	23
04 Fork Carriage Assembly(European style) (511546038502).....	25
04 Fork Carriage Assembly(European style) (511546038502) Continuation.....	27
05 Fork Carriage Assembly(American style) (511546038503).....	29
05 Fork Carriage Assembly (American style) (511546038503)续.....	31
05 Fork Carriage Assembly(American style) (511546038503)续.....	33
06 Battery Clamping Device (511546038502)	35
07 Seat Assembly (Electrically Adjustable) (511546037501)	37
08 Seat Assembly (Manually Adjustable) (511546037502).....	39
09 Platform Assembly (511546018001)	41
Chapter 4: Steering System, Brake, Wheels	43
01 Side Wheel (511546016501)	43
Chapter 5: Electrical Parts	45
01 Display Assembly (511546010001).....	45
02 Wire Harness (511546033001)	47
03 Controller Assembly (511546033002).....	49
04 Charger (511546036501).....	51
05 Traction Battery (511546037002).....	53
Chapter 7: Others	55
01 Labels and Decals (Neutral) (511546047001)	55
Appendix.....	57
01 Electrical Diagram for PRS-200 Curtis(511533003003).....	57
02 Hydraulic Diagram (511546045511)	58
03 Consumable Parts List	59

Print Number:

Print Date:

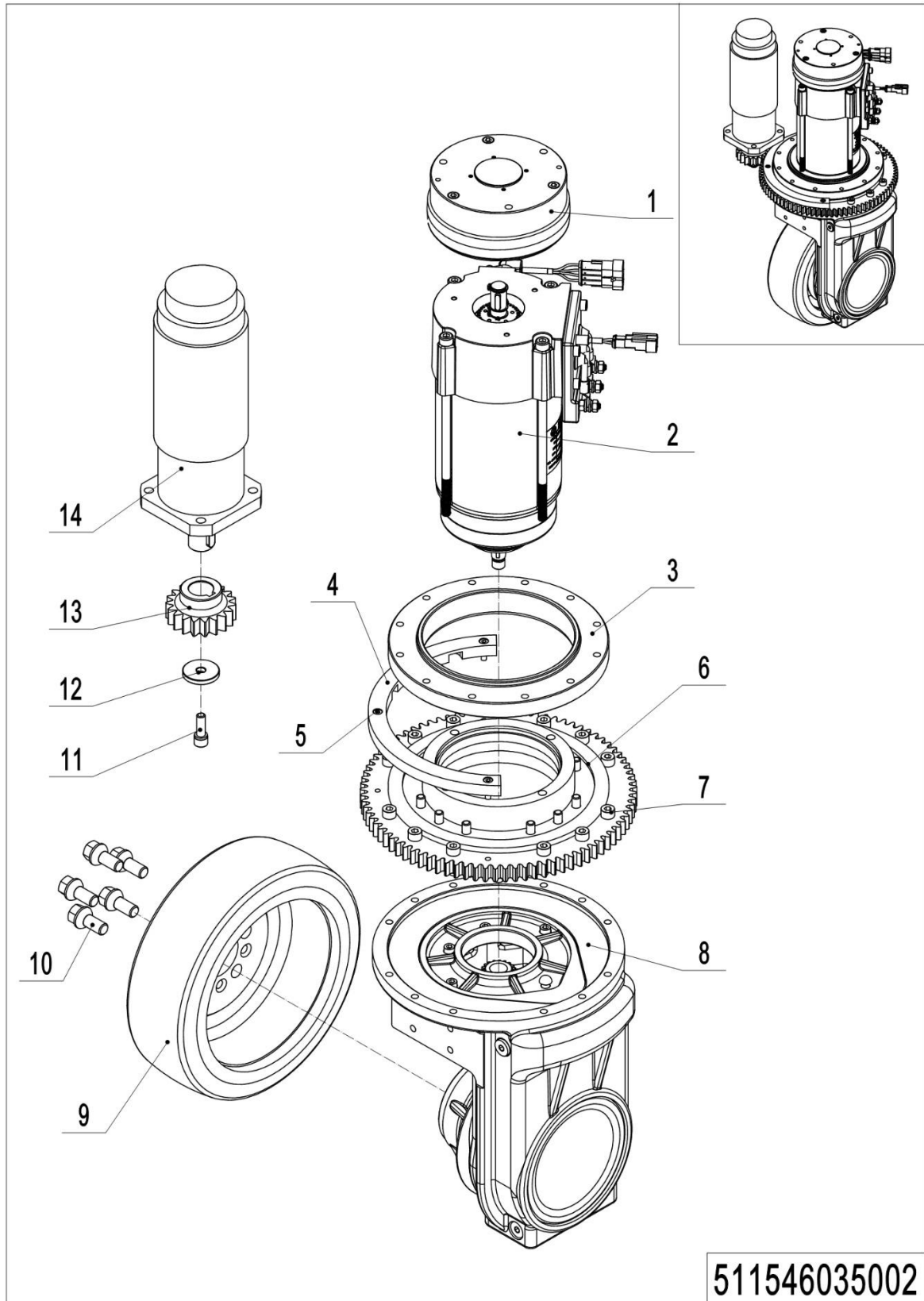
Chapter 1: Drive system

01 Drive unit (511546035001)



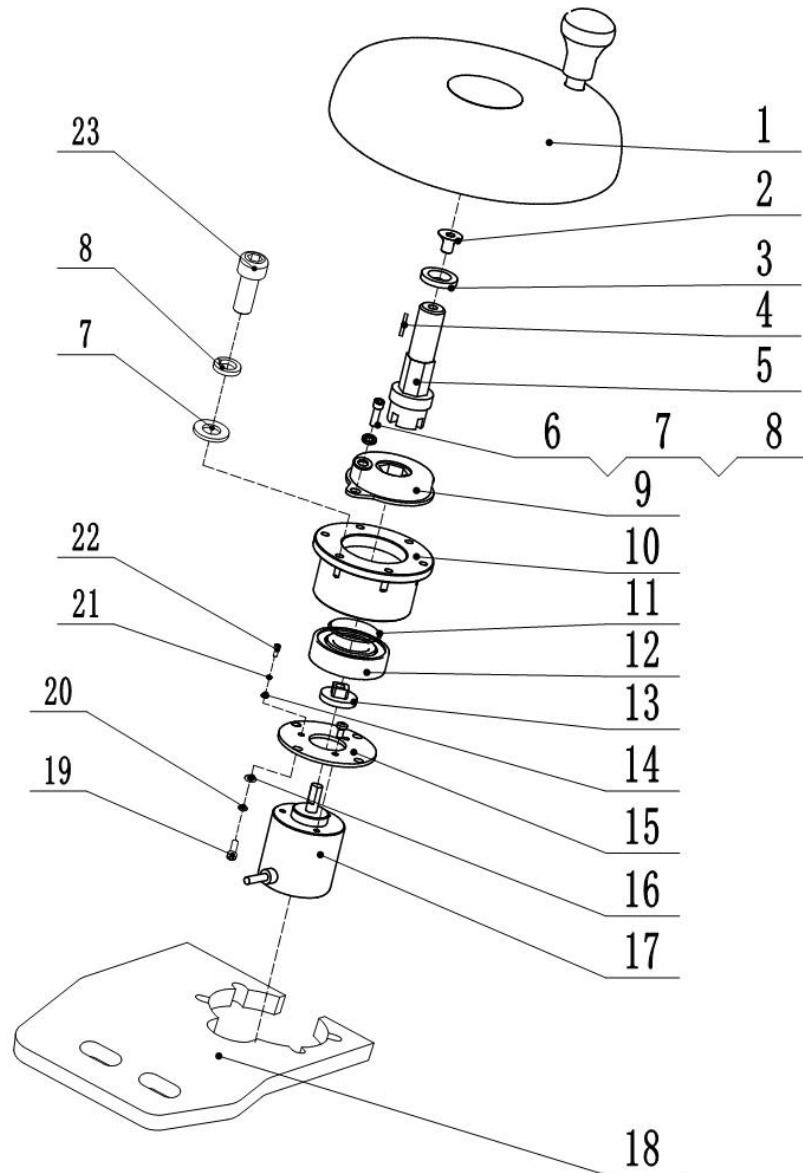
01 Drive unit (511546035001)

No.	Item Code	Mark	Item Description	Qty.	Substitute	Note
1	940900500026		Drive Assembly	1		See 511546035002
2	910200200059		Screw M8x30	10		
3	910400500006		Spring Washer	14		
4	910200200057		Screw M8x20	4		

02 Traction and Steering Assembly (511546035002)

02 Traction and Steering Assembly (511546035002)

No.	Item Code	Mark	Item Description	Qty.	Substitute	Note
1	961001500016		Electromagnetic Brake	1		
2	961001500015		Motor	1		PT20HPLUS、
3	961001500011		Flange Plate	1		
4	961001500010		Induction Block	1		
5	941100400016		Screw M8x15	3		
6	961001500009		Slewing Bearing	1		
7	910200200147		Screw M8x25	25		
8	961002101000		Gearbox Assembly	1		PT20H、
9	940300400053		Drive WheelΦ250x80	1		
10	940998520029		Wheel Screw	5		
11	910400500019		Spring Washer	1		
12	961001500013		Retaining Ring	1		
13	961001500012		Gear	1		
14	920900100069		Motor	1		

03 Electronic Steering Assembly (511546031501)

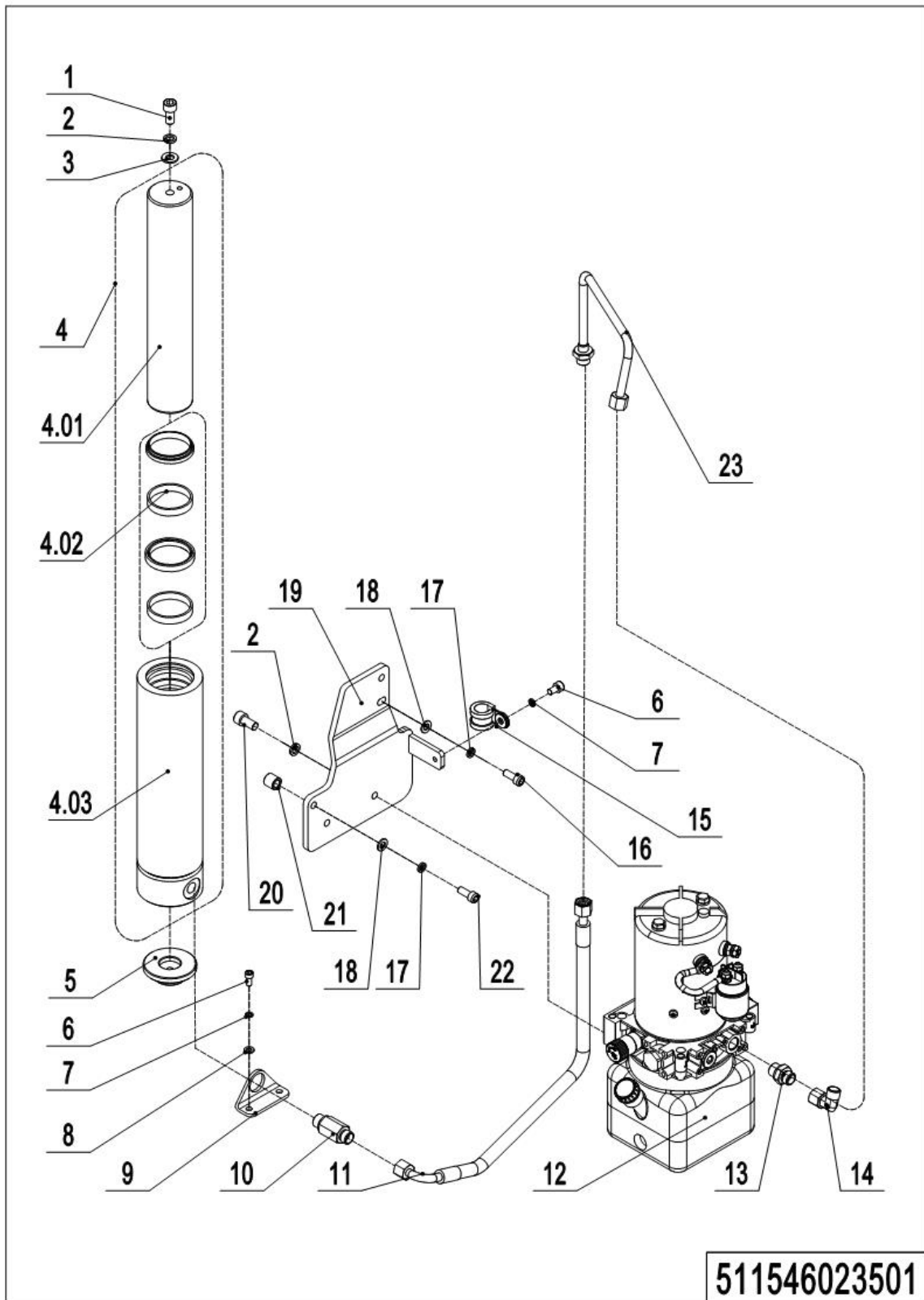
511546031501

03 Electronic Steering Assembly (511546031501)

No.	Item Code	Mar	Item Description	Qty.	Substitute	Note
1	940801700001		Handwheel	1		
2	910200400015		Screw M6x10	1		
3	212131520006		Washer	1		
4	910600800004		Flat Key	1		
5	212131520005		Axle	1		
6	910200200020		Screw M5x8	2		
7	910400100004		Washer5	6		
8	910400500004		Spring Washer5	6		
9	271531511021		Rotary Damper	1		
10	212131520007		Bearing Base	1		
11	910401400012		Circlip	1		
12	910700200004		Bearing	1		
13	505931520002		Link Block	1		
14	910400100002		Washer 3	3		
15	212131520008		Fixing Plate	1		
16	910400100002		Washer 4	4		
17	921800200039		Potentiometer	1		
18	511531520001		Mounting Plate	1		
19	910200200012		Screw M4x8	4		
20	910400500003		Spring Washer 4	4		
21	910400500002		Spring Washer 3	3		
22	910200200001		Screw M3x8	3		
23	910200200023		Screw M5x16	4		

Chapter 2: Hydraulic System

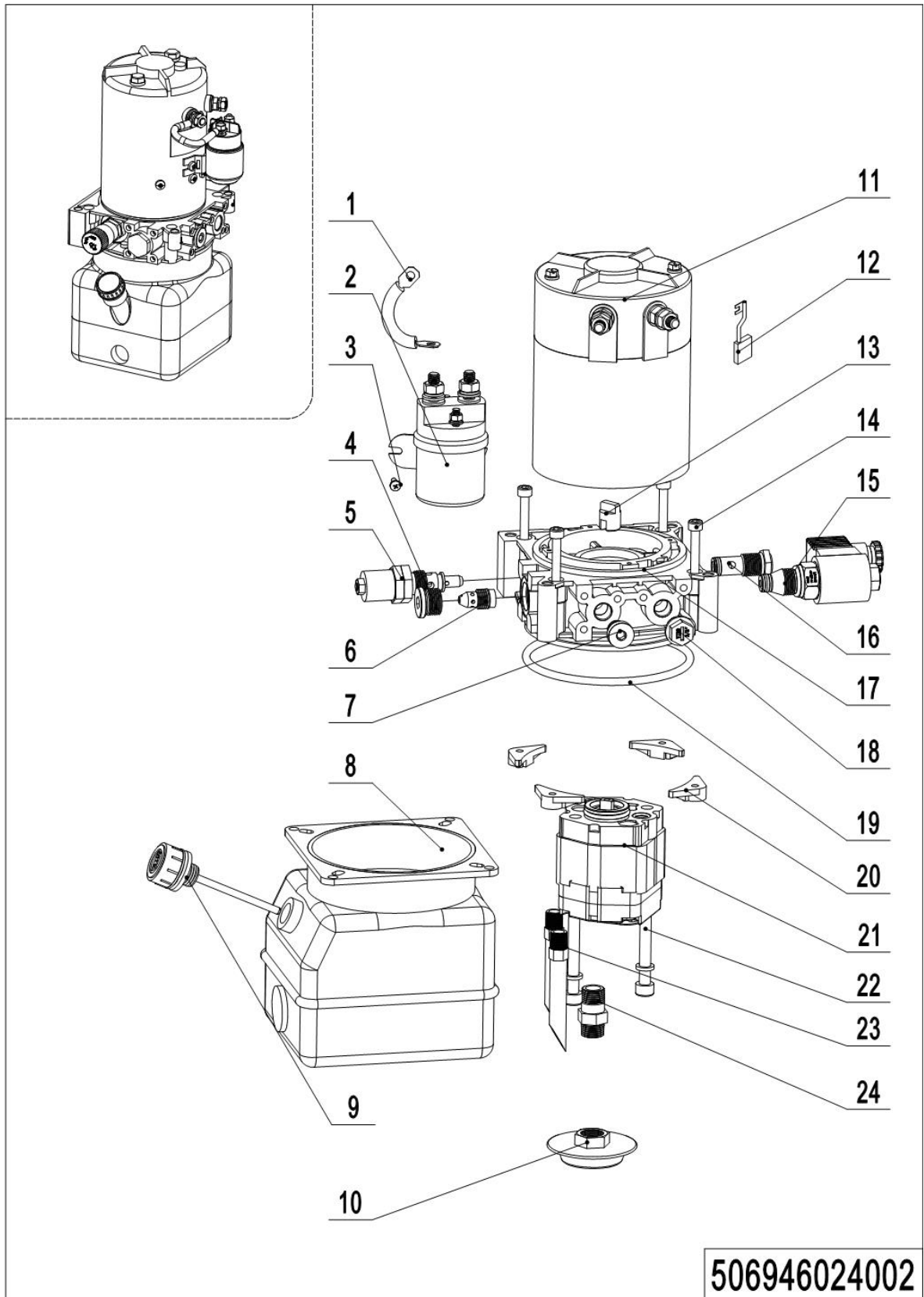
01 Hydraulic Assembly (511546023501)



01 Hydraulic Assembly (511546023501)

No.	Item Code	Mark	Item Description	Qty.	Substitute	Note
1	910202000075		Screw M10x40	1		
2	910400500007		Spring Washer	3		
3	910400100007		Flat Washer	1		
4	505724010001		Cylinder	1		
4.01	505724020003		Piston RodΦ50x308	1		
4.02	505798510001		Seal Kit	1		
4.03	505724010002		Cylinder Block	1		
5	505621520035		Cylinder Base	1		
6	910200200033		Screw M6x12	3		
7	910400500005		Spring Washer	3		
8	910400100005		Flat Washer	2		
9	505621520035		Cylinder Base	1		
10	511523520001		Adapter	1		
11	511523520003		Rubber Hose	1		
12	950900100024		Pump Unit	1		See 506946024002
13	950400300007		Adapter	1		
14	950400200003		Joint	1		
15	951000100003		Hose Clamp	1		
16	910200200058		Screw M8x25	2		
17	910400500006		Spring Washer	3		
18	910400100006		Flat Washer	3		
19	511523510001		Bracket	1		
20	910200200075		Screw M10x20	2		
21	511523520004		Bushing	1		
22	910200200061		Screw M8x40	1		
23	511523520002		Tube	1		

02 Hydraulic Unit (506946024002)



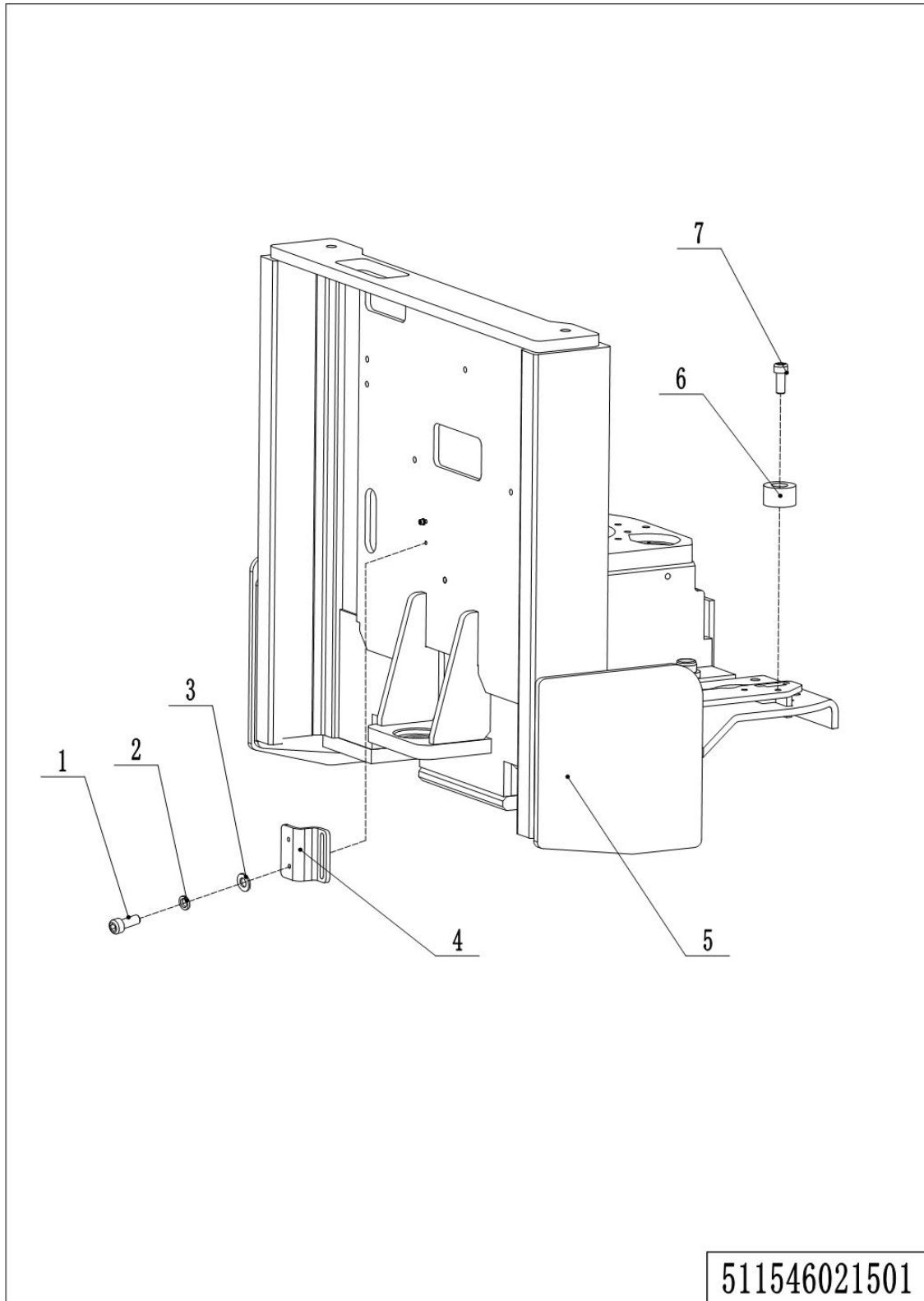
506946024002

02 Hydraulic Unit (506946024002)

No.	Item Code	Mark	Item Description	Qty.	Substitute	Note
--	950900100024		Pump Unit	1		
1	505798510004		Cables	1		
2	532098510002		Switch	1		
3	910200500036		Screw M5x8	1		
4	402698520020		Plug	1		
5	505798510007		Overflow Valve	1		
6	505798510006		Compensation Valve	1		
7	505798520014		End Cap	1		
8	505798520009		Tank	1		
9	505698520047		Cap-Tank	1		
10	402698520010		Filter	1		
11	532098510001		Motor	1		
12	505798510013		Carbon Brush Kit	1		
13	505798520018		Coupling	1		
14	910200200042		Screw M6x45	4		
15	532098510006		Magnetic Valve	1		
16	505798510012		Check Valve	1		
17	505798520005		Valve Block	1		
18	505798520015		End Cap	1		
19	910800100088		O-Ring	1		
20	505798520008		Nut	4		
21	532098510000		Gear Pump	1		
22	910200200070		Screw M8x80	2		
23	505798520012		Return Pipe	2		
24	505798520010		Oil Tube	1		

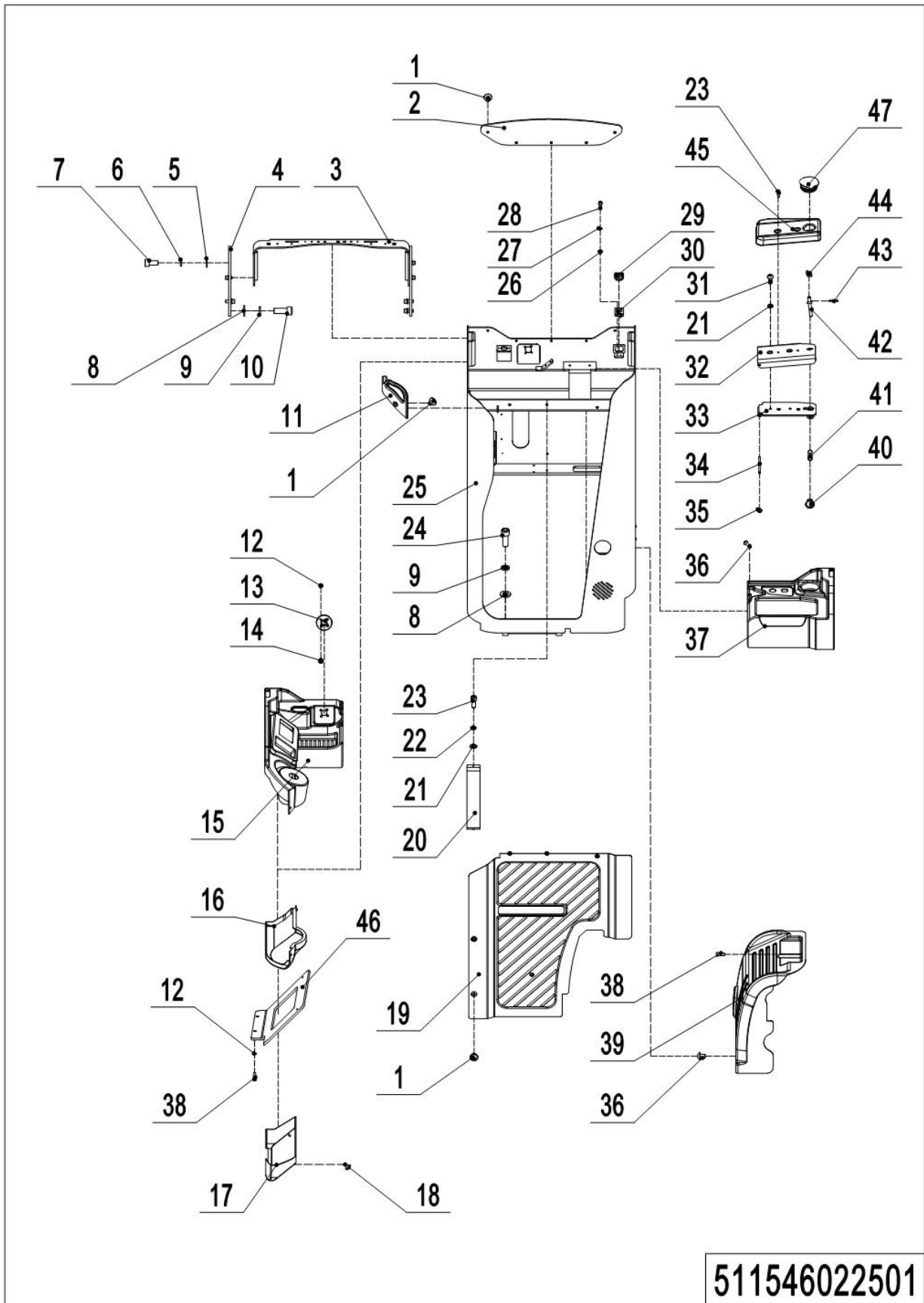
Chapter 3: Truck Structure

01 Chassis (511546021501)



01 Chassis (511546021501)

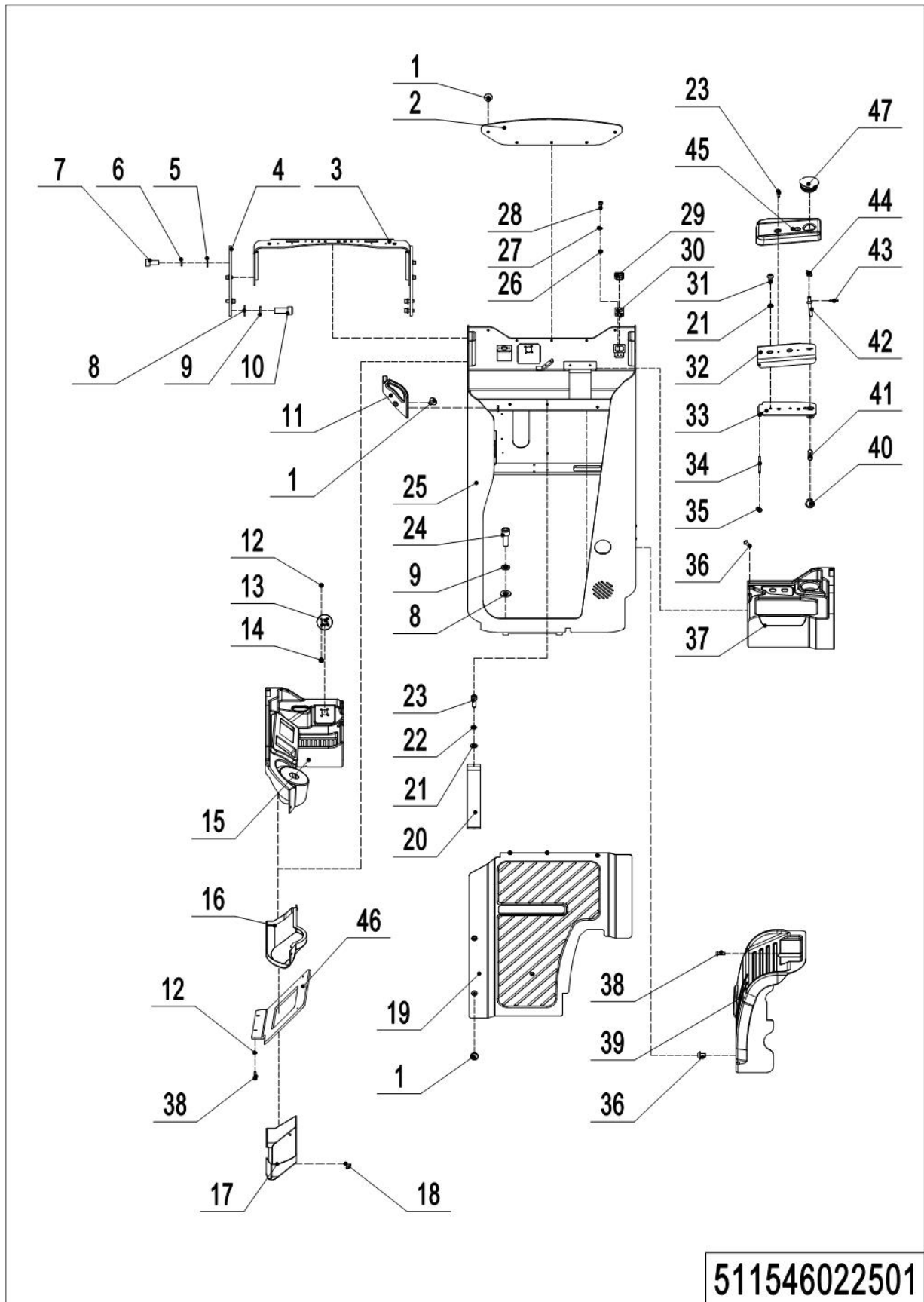
No.	Item Code	Mark	Item Description	Qty.	Substitute	Note
1	910200200022		Screw M5x12	2		
2	910400500004		Spring Washer	2		
3	910400100004		Washer	2		
4	505721520031		Mounting Plate	1		
5	511521510001		Chassis	1		540
5	511521510002		Chassis	1		685
6	532621520062		Crash Pad	2		
7	910200200053		Screw M8x12	1		

02 Operator Platform (511546022501)

02 Operator Platform (511546022501)

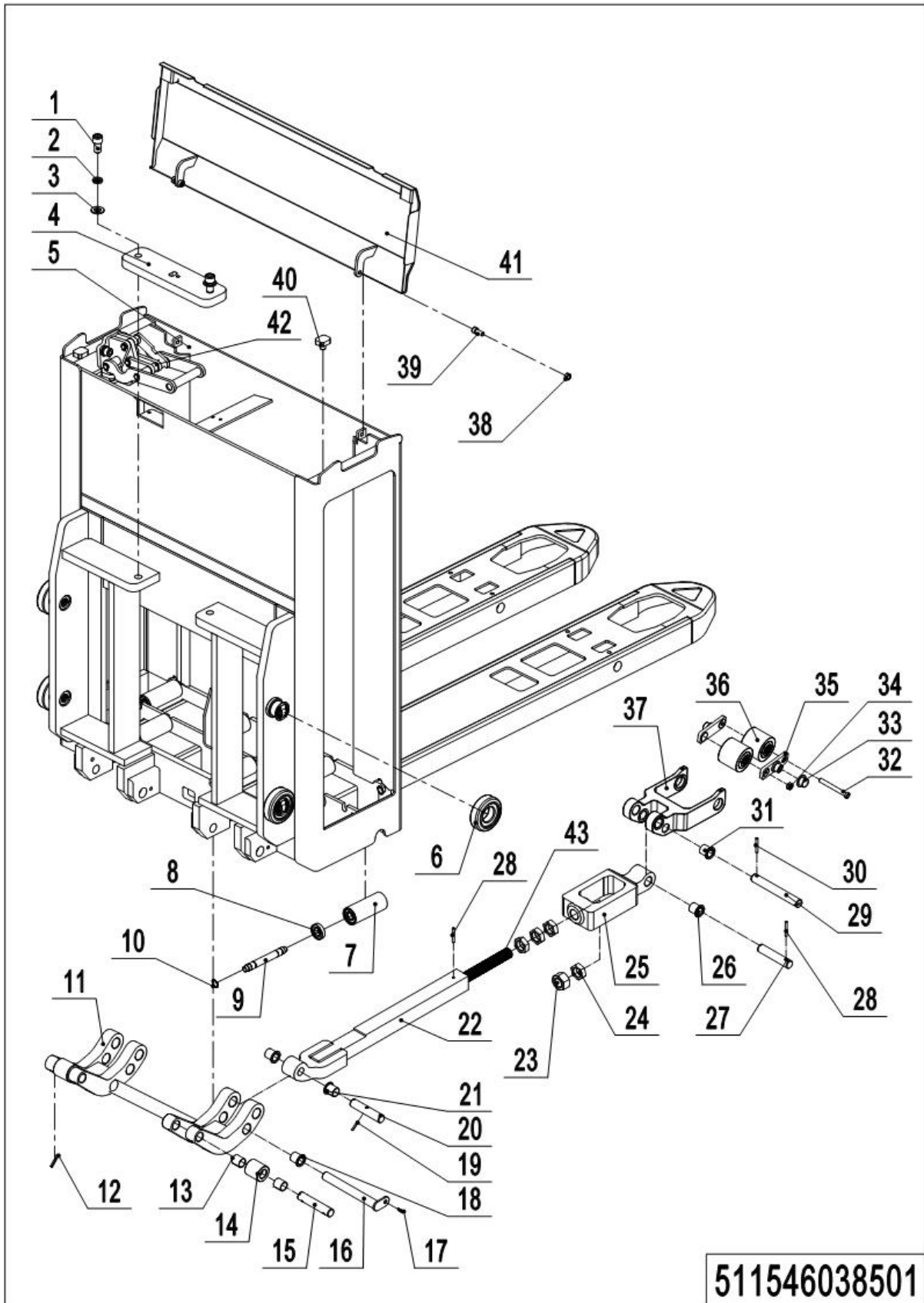
No.	Item Code	Mark	Item Description	Qty.	Substitute	Note
1	910202700003		Screw M8x12	9		
2	511522520034		Windshield Baffle	1		
3	511522510002		Bending Plate	1		
4	511522520032		Side Plate	2		
5	910400100007		Flat Washer	4		
6	910400500007		Spring Washer	4		
7	910200200076		Screw M10x25	4		
8	910400100008		Flat Washer	6		
9	910400500008		Spring Washer	6		
10	910200200097		Screw M12x25	4		
11	511522520049		Handrail	1		
12	910400500005		Spring Washer	6		
13	511522520068		Mounting Base	1		
14	910200200038		Screw M6x25	4		
15	511522520052		Dashboard	1		
16	511522520050		Close Plate	1		
17	511522520048		Storage Box	1		
18	910200200045		Screw M6x6	2		
19	511522520047		Guard Plate	1		
20	511522520058		Fixing Plate	1		
21	910400500006		Spring Washer	4		
22	910400100006		Flat Washer	2		
23	910200200057		Screw M8x20	4		
24	910200200103		Screw M12x55	2		
25	511522510001		Cockpit	1		
26	910400500004		Spring Washer	2		
27	910400100004		Washer	2		
28	910200200022		Screw M5x12	2		
29	506621520022		Dust Cap	1		

02 Operator Platform (511546022501) Continuation



02 Operator Platform (511546022501) Continuation

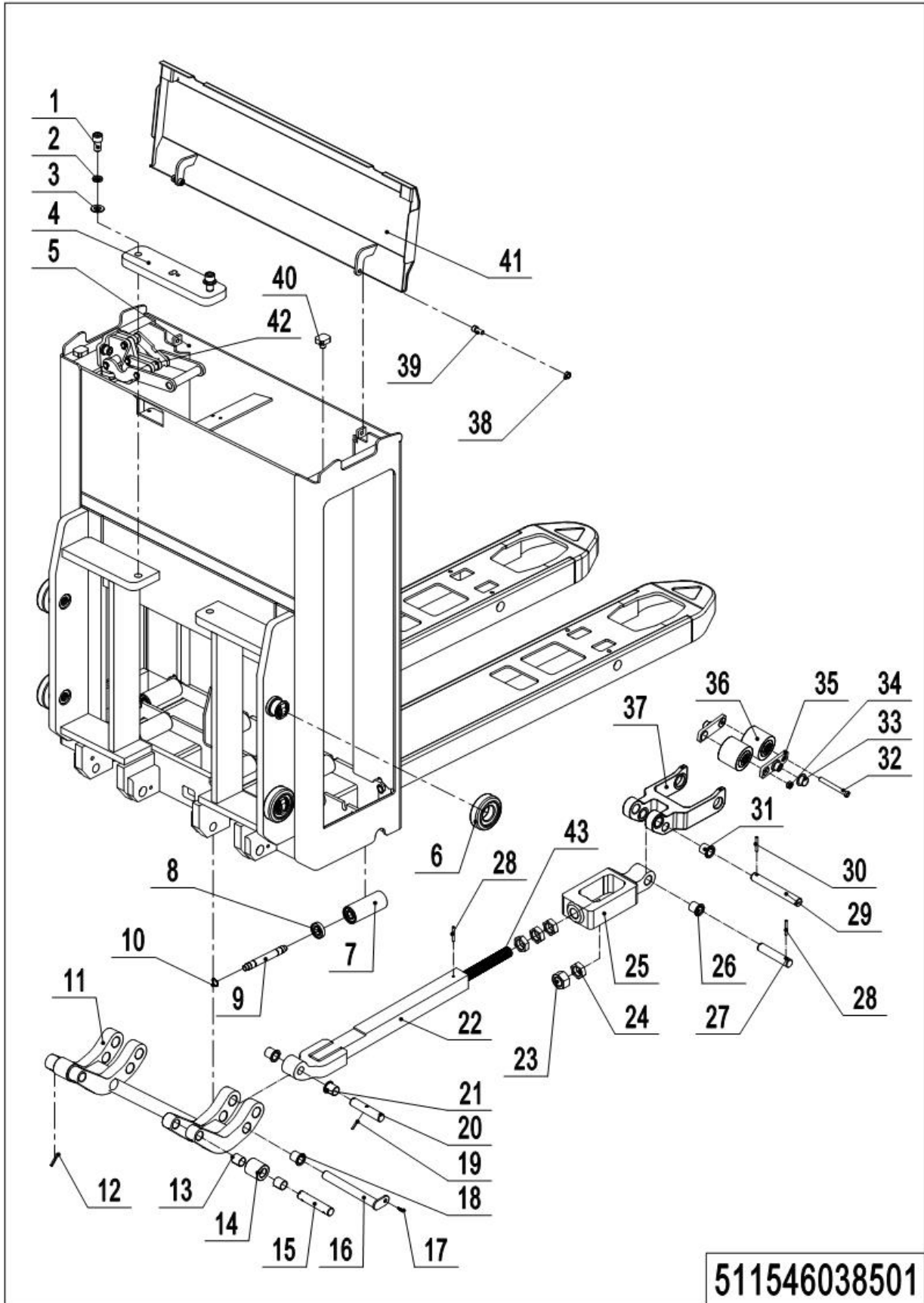
No.	Item Code	Mark	Item Description	Qty.	Substitute	Note
30	511522520069		Holder	1		
31	910200300024		Screw M8x16	2		
32	511522510003		Plate	1		
33	511522510005		Baseboard	1		
34	511522520038		Axle	1		
35	910401300001		Circlip	2		
36	910200300017		Screw M6x12	4		
37	511522520053		Dashboard	1		
38	910200200033		Screw M6x12	3		
39	511522520051		Plastic Sealing	1		
40	910401300009		Circlip	2		
41	511522520036		Adjusting Axle	1		
42	511522520037		Screw	1		
43	910600400003		Spring Pin 3x24	1		
44	511522510004		Nut	1		
45	511522520046		Elbow Support Pad	1		
46	511522520080		Fixing Plate	1		
47	511522520031		rubber cover	1		

03 Fork Carriage Assembly (511546038501)

03 Fork Carriage Assembly (511546038501)

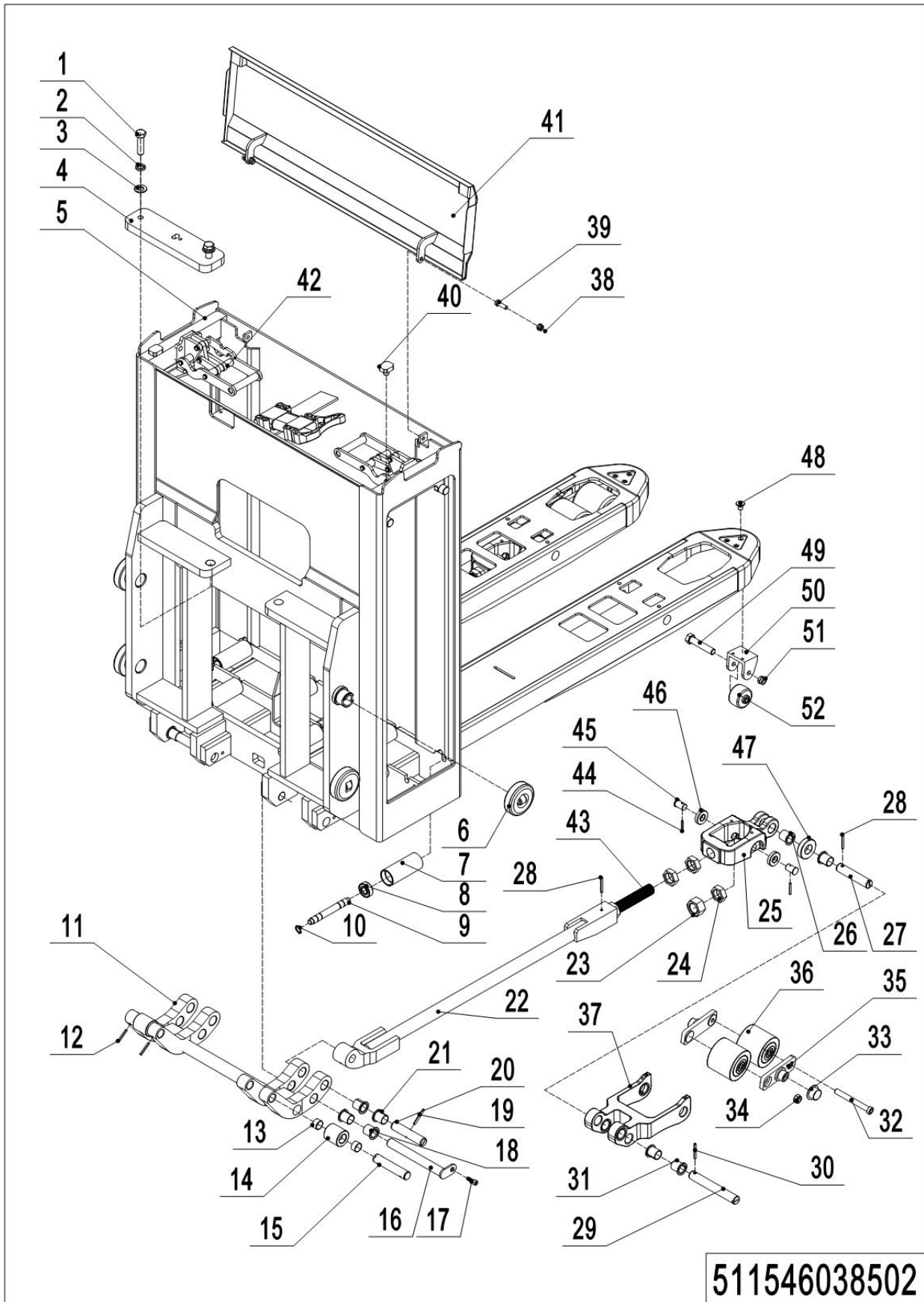
No.	Item Code	Mark	Item Description	Qty.	Substitute	Note
1	910100300065		Bolt M14x50	2		
2	910400500009		Spring Washer	2		
3	910400100009		Flat Washer	2		
4	511538520066		Cylinder Top Plate	1		
5	511538510001		Shovel Frame	1		540x1150
6	940200300008	1	Compound Roller	4		
7	565921520064		Roller	8		
8	910700200017		Bearing	16		
9	565921520063		Axle	8		
10	910401300006		Circlip	16		
11	511538510008		Rib Plate	1		
12	910600500003		Spring Pin 5x32	2		
13	940500100012		Bushing	4		
14	566538520056		Roller	2		
15	566538520055		Roller Shaft	2		
16	507038510006		Pin	2		
17	910100300022		Bolt M8x20	2		
18	940500400022		Oilless Bearing	4		
19	910600500005		Spring Pin 5x40	2		
20	566538520053		Axle	2		
21	940500400022		Oilless Bearing	4		
22	511538510009		Pull Rod	2		1150
23	910300200011		Nut	2		
24	910300400011		Nut	8		
25	507038520072		Connecting Rod	2		
26	940500400021		Oilless Bearing	4		
27	507038520074		Axle	2		
28	910600500005		Spring Pin 5x40	4		

03 Fork Carriage Assembly (511546038501) Continuation



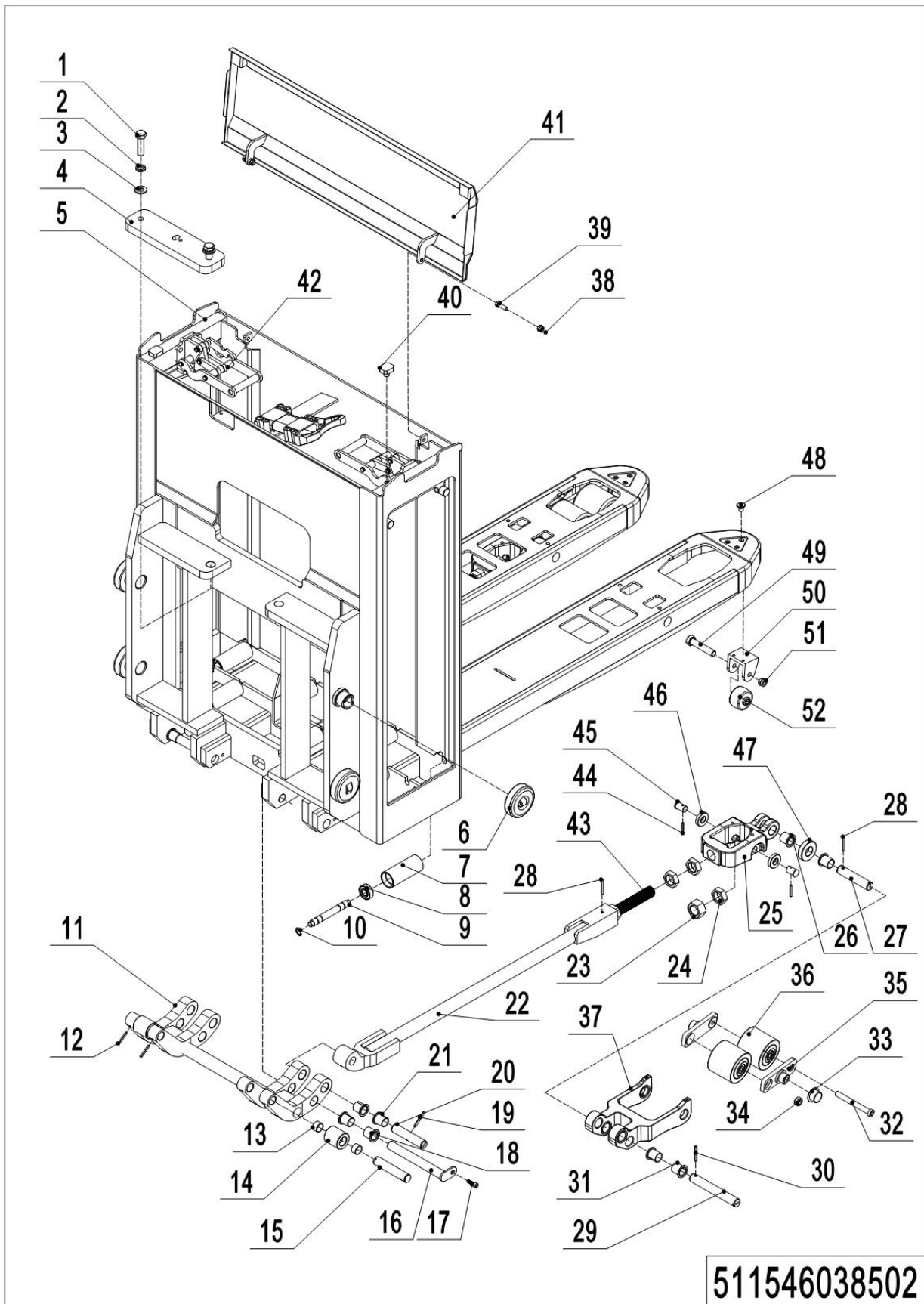
03 Fork Carriage Assembly (511546038501) Continuation

No.	Item Code	Mark	Item Description	Qty.	Substitute	Note
30	910600500006		Spring Pin 5x50	2		
31	940500400022		Oilless Bearing	4		
32	504817020005		Screw M12x102	2		
33	940500400023		Oilless Bearing	4		
34	910300500006		Nut	4		
35	507017020001		Connecting Plate	4		
36	940300300059		WheelΦ82x70	4		
37	507038520073		Riser	2		
38	910300500004		Nut	2		
39	910100300023		Bolt M8x25	2		
40	505938520016		Crash Pad	2		
41	511538510002		Close Plate	1		
42	511538510003		Battery Clamping Deviceing Device	2		See 511546038502
43	507038520071		Screw	2		

04 Fork Carriage Assembly(European style) (511546038502)

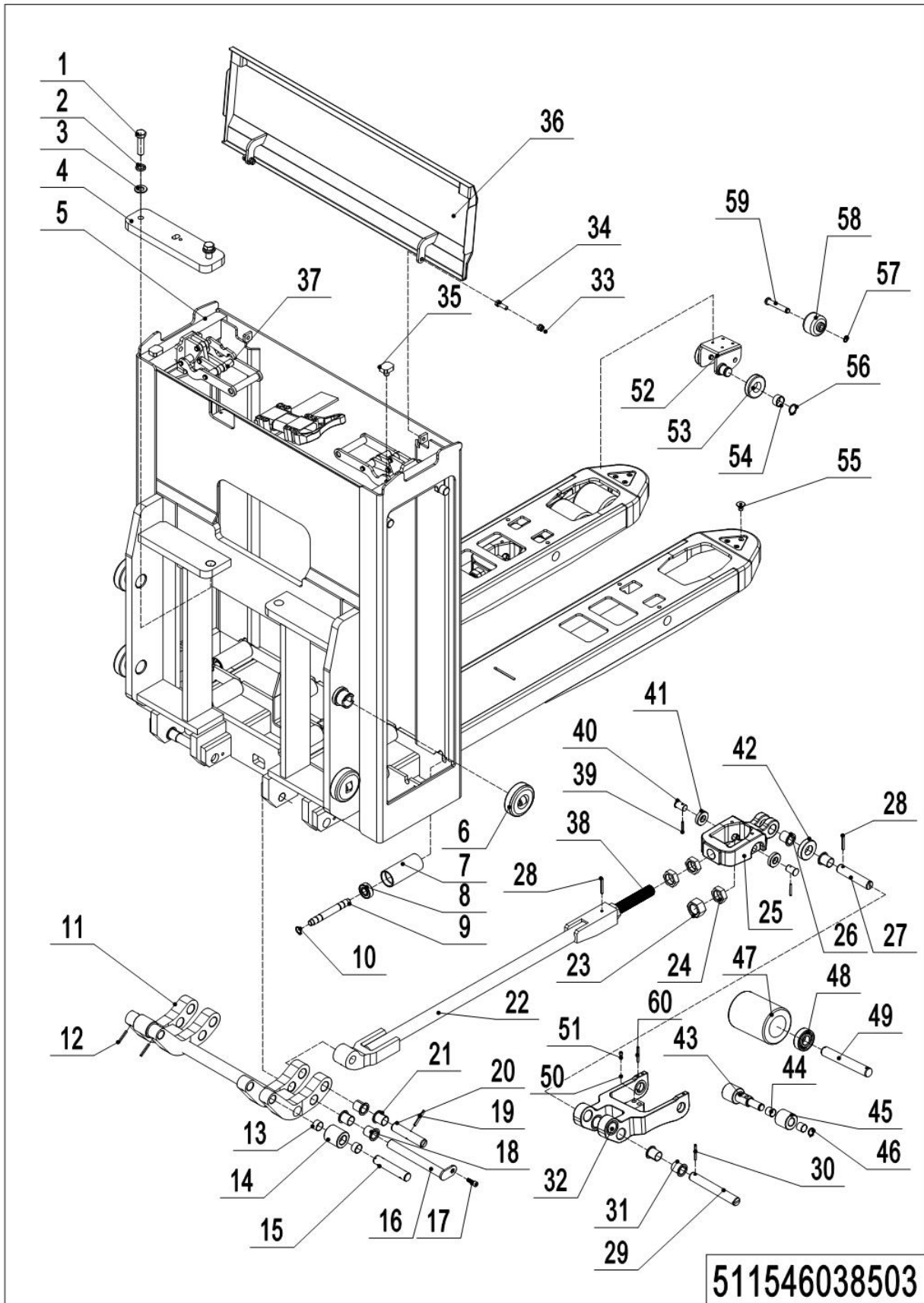
04 Fork Carriage Assembly(European style) (511546038502)

No.	Item Code	Mark	Item Description	Qty.	Substitute	Note
1	910100300065		Bolt M14x50	2		
2	910400500009		Spring Washer	2		
3	910400100009		Flat Washer	2		
4	511538520066		Cylinder Top Plate	1		
5	511538510016		Shovel Frame	1		540x1150
5	511538510018		Shovel Frame	1		540x1190
5	511538510021		Shovel Frame	1		540x2400
6	940200300008	1	Compound Roller	4		
7	565921520064		Roller	8		
8	910700200017		Bearing	16		
9	565921520063		Axle	8		
10	910401300006		Circlip	16		
11	511538510008		Rib Plate	1		
12	910600500003		Spring Pin 5x32	2		
13	940500100012		Bushing	4		
14	566538520056		Roller	2		
15	566538520055		Roller Shaft	2		
16	507038510006		Pin	2		
17	910100300022		Bolt M8x20	2		
18	940500400022		Oilless Bearing	4		
19	910600500005		Spring Pin 5x40	2		
20	566538520053		Axle	2		
21	940500400022		Oilless Bearing	4		
22	511538510015		Pull Rod	2		1150
22	511538510017		Pull Rod	2		1190
22	511538510022		Pull Rod	2		2400
23	910300200011		Nut	2		
24	910300400011		Nut	8		
25	511538520085		Connecting Rod	2		

04 Fork Carriage Assembly(European style) (511546038502) Continuation

04 Fork Carriage Assembly(European style) (511546038502) Continuation

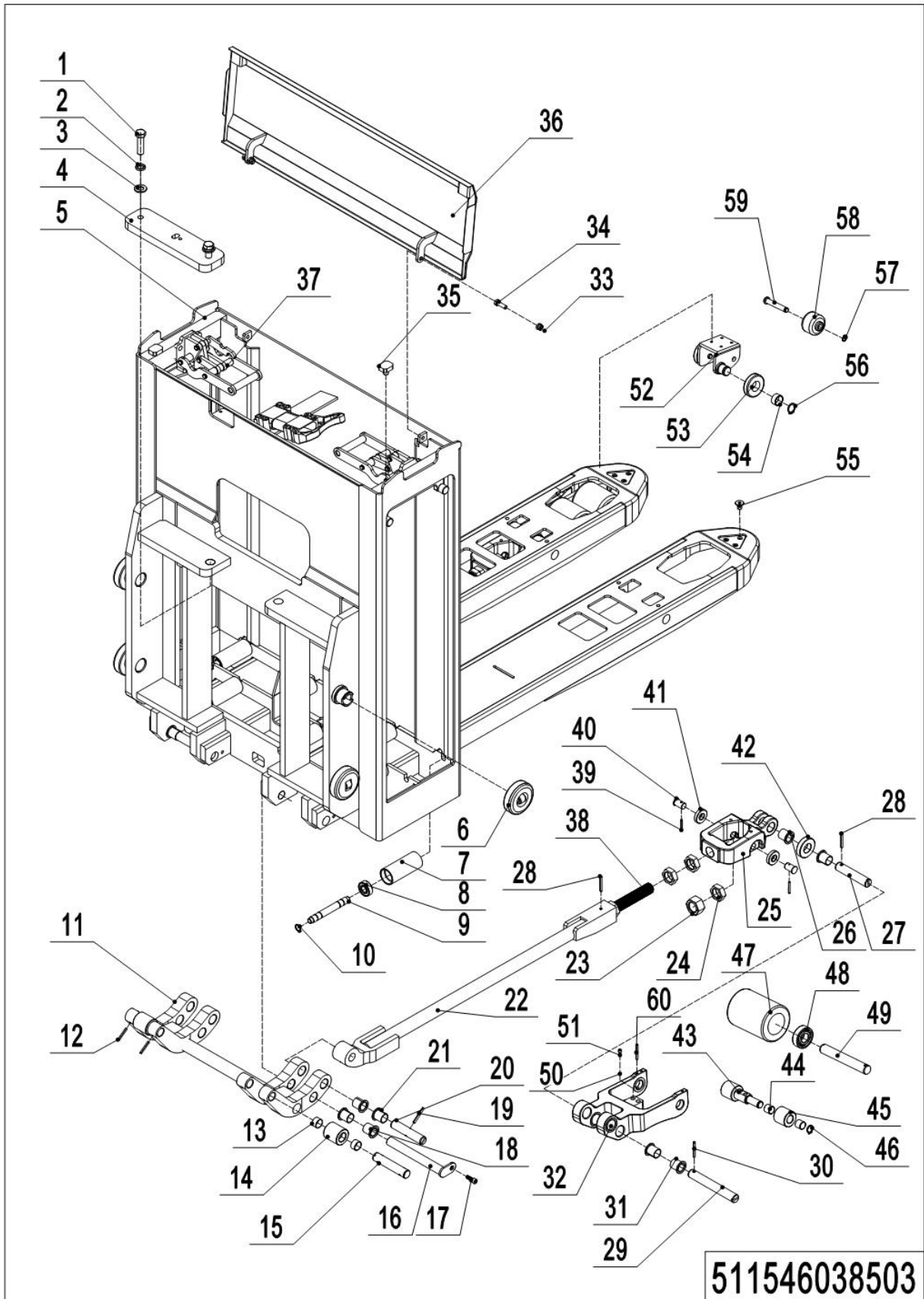
No.	Item Code	Mark	Item Description	Qty.	Substitute	Note
26	940500400026		Oilless Bearing	4		
27	507038520074		Axle	2		
28	910600500005		Spring Pin 5x40	4		
29	566538520054		Pull Rod Axle	2		
30	910600500006		Spring Pin 5x50	2		
31	940500400022		Oilless Bearing	4		
32	504817020005		Screw M12x102	2		
33	940500400023		Oilless Bearing	4		
34	910300500006		Nut	4		
35	507017020001		Connecting Plate	4		
36	940300300059		WheelΦ82x70	4		
37	511538520116		Riser	2		
38	910300500004		Nut	2		
39	910100300023		Bolt M8x25	2		
40	505938520016		Crash Pad	2		
41	511538510002		Close Plate	1		
42	511538510003		Battery Clamping Deviceing	2		See 511546038502
43	507038520071		Screw	2		
44	910600500001		Spring Pin 4x32	4		
45	511538520078		Axle	4		
46	511538520077		Roller	4		
47	511538520076		Roller	2		
48	910200400016		Bolt M6x12	6		
49	910100100036		Bolt M10x65	2		
50	504838520022		Roller Kit	2		
51	910300500005		Nut M10	2		
52	511538520100		Roller	2		

05 Fork Carriage Assembly(American style) (511546038503)

05 Fork Carriage Assembly (American style) (511546038503)

No.	Item Code	Mark	Item Description	Qty.	Substitute	Note
1	910100300065		Bolt M14x50	2		
2	910400500009		Spring Washer	2		
3	910400100009		Flat Washer	2		
4	511538520066		Cylinder Top Plate	1		
5	511538510024		Shovel Frame	1		685x1190
5	511538510026		Shovel Frame	1		685x2400
6	940200300008	1	Compound Roller	4		
7	565921520064		Roller	8		
8	910700200017		Bearing	16		
9	565921520063		Axle	8		
10	910401300006		Circlip	16		
11	511538510008		Rib Plate	1		
12	910600500003		Spring Pin 5x32	2		
13	940500100012		Bushing	4		
14	566538520056		Roller	2		
15	566538520055		Roller Shaft	2		
16	507038510006		Pin	2		
17	910100300022		Bolt M8x20	2		
18	940500400022		Oilless Bearing	4		
19	910600500005		Spring Pin 5x40	2		
20	566538520053		Axle	2		
21	940500400022		Oilless Bearing	4		
22	511538510017		Pull Rod	2		1190
22	511538510022		Pull Rod	2		2400
23	910300200011		Nut	2		
24	910300400011		Nut	6		
25	511538520085		Connecting Rod	2		
26	940500400021		Oilless Bearing	4		
27	507038520074		Axle	2		

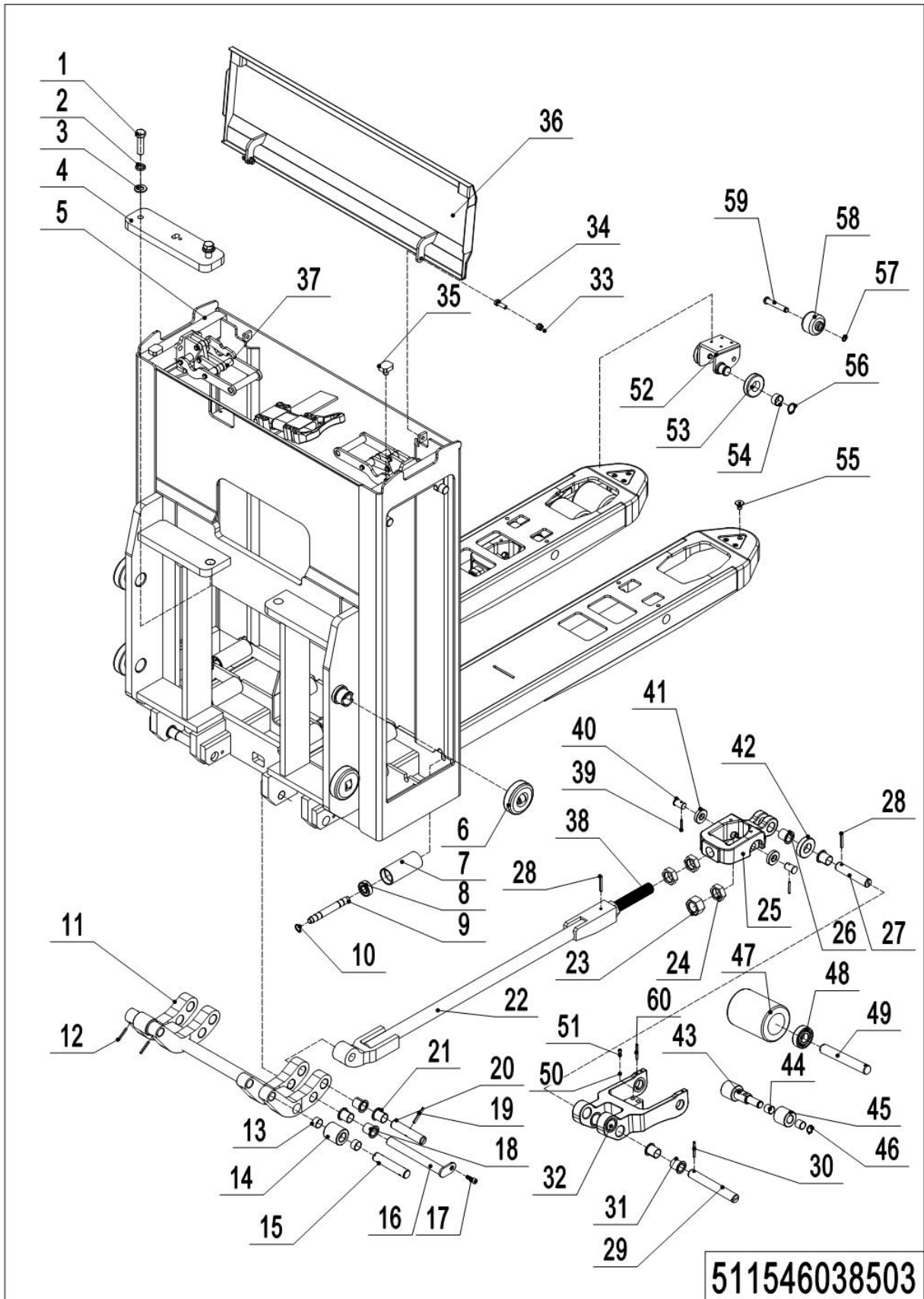
05 Fork Carriage Assembly (American style) (511546038503) 续



05 Fork Carriage Assembly (American style) (511546038503) 续

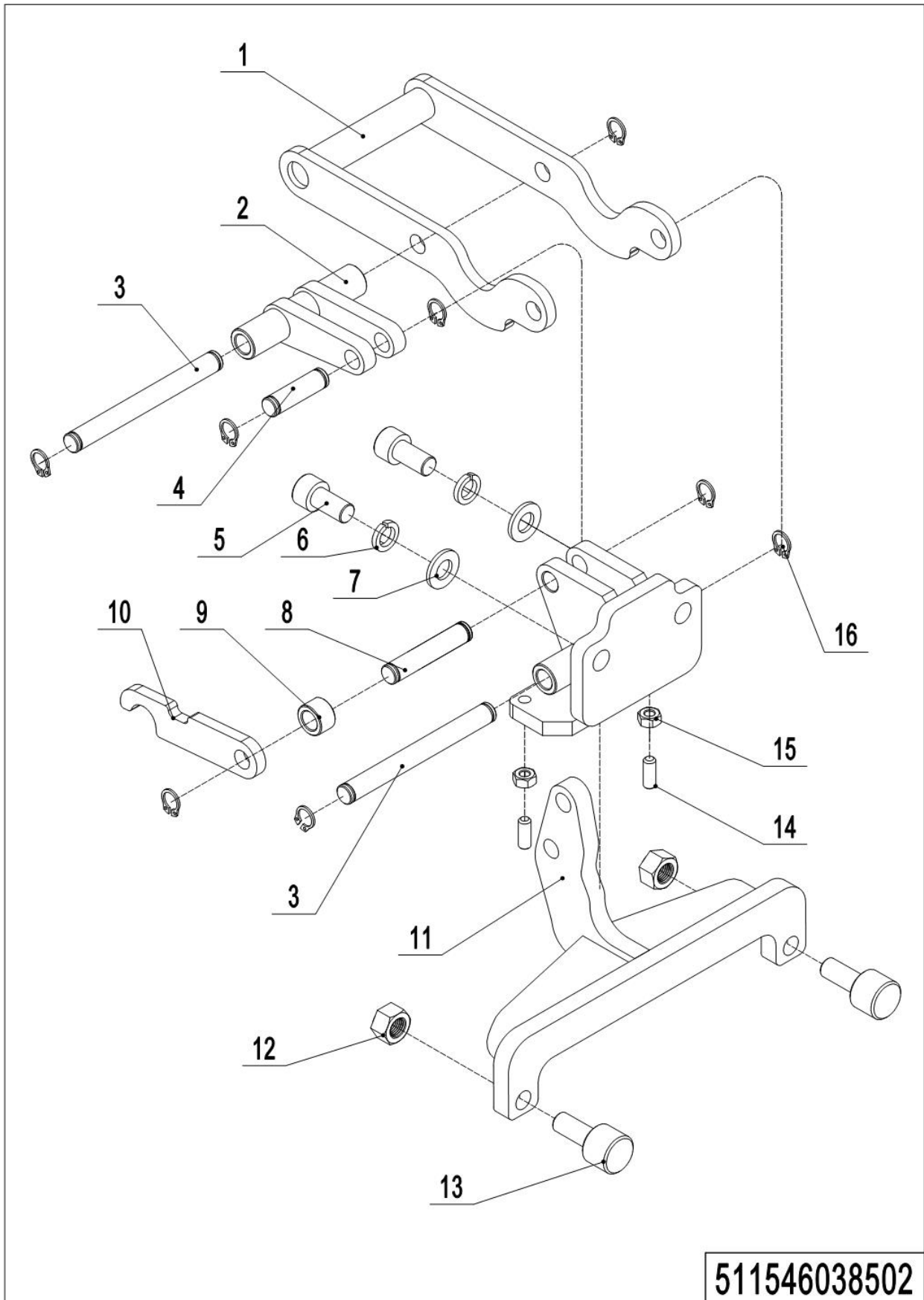
No.	Item Code	Mark	Item Description	Qty.	Substitute	Note
28	910600500005		Spring Pin 5x40	4		
29	566538520054		Pull Rod Axle	2		
30	910600500006		Spring Pin 5x50	2		
31	940500400022		Oilless Bearing	4		
32	511538520097		Riser	2		
33	910300500004		Nut M8	2		
34	910100300023		Bolt M8x25	2		
35	505938520016		Crash Pad	2		
36	511538510002		Close Plate	1		
37	511538510003		Battery Clamping Deviceing	2		See 511546038502
38	507038520071		Screw	2		
39	910600500001		Spring Pin 4x32	2		
40	511538520078		Axle	4		
41	511538520077		Roller	4		
42	511538520076		Roller	4		
43	511538520108		Axle	2		
44	940500100103		Oilless Bearing	8		
45	511538520107		Roller	4		
46	910401300006		Circlip GB894. 1-15	4		
47	940300300006		Wheel Φ 82x110	2		
48	910700200019		Bearing GB276-6204	4		
49	566517020002		Axle Φ 20x138	2		
50	910400500006		Spring Washer 8	4		
51	910200200059		Bolt M8x30	4		
52	511538510028		Roller Kit	2		
53	504838520025		Roller	4		
54	940500400026		Oilless Bearing	4		
55	910200400053		Bolt M6x16	6		
56	910401700005		Circlip GB896-15	4		

05 Fork Carriage Assembly(American style) (511546038503)续



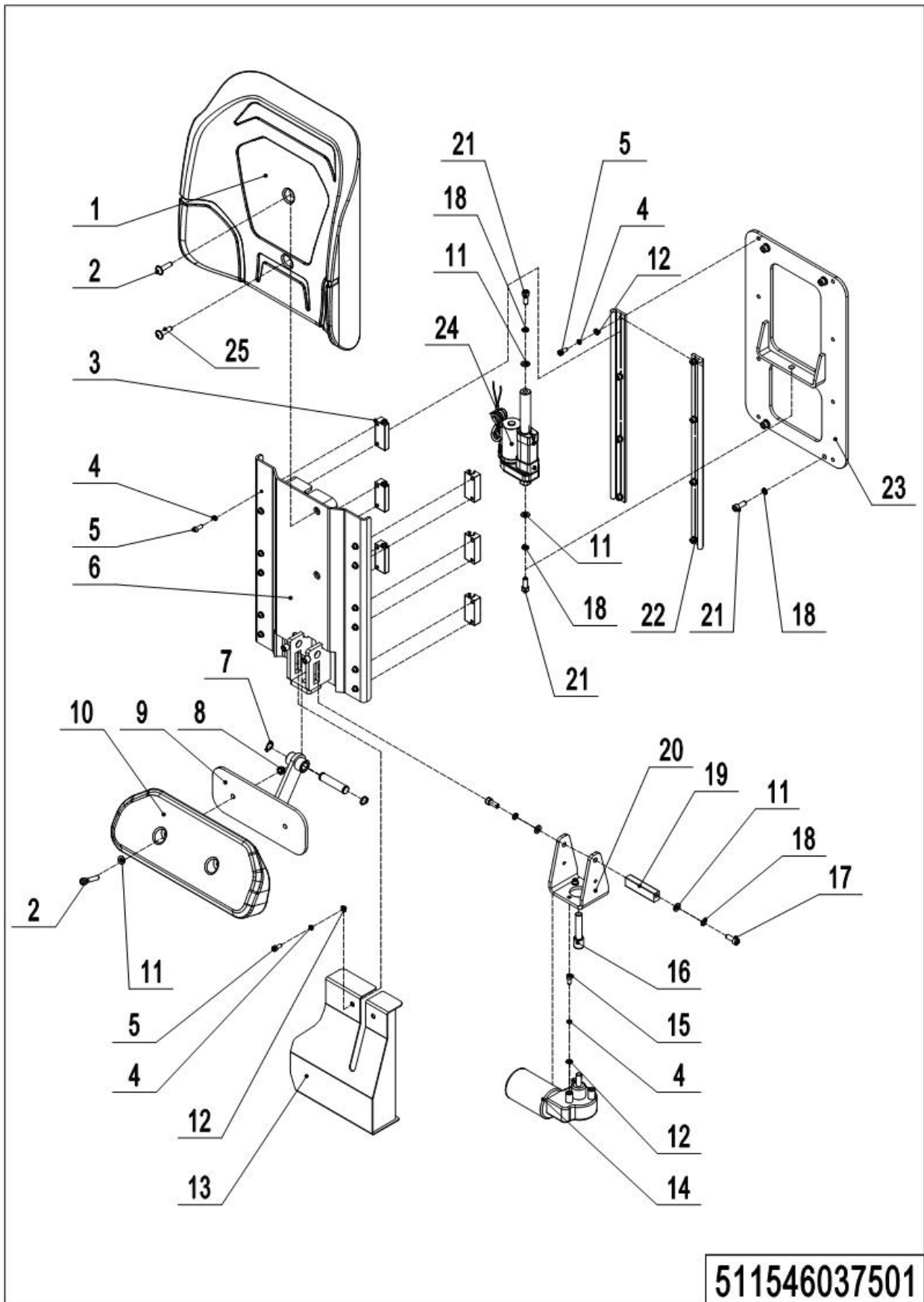
05 Fork Carriage Assembly (American style) (511546038503) 续

No.	Item Code	Mark	Item Description	Qty.	Substitute	Note
57	910401700003		Circlip 9	2		
58	504817020010		Roller	2		
59	504817020009		Axle Φ 10x61	2		
60	910600500005		Spring Pin 5x40	2		

06 Battery Clamping Device (511546038502)

06 Battery Clamping Device (511546038502)

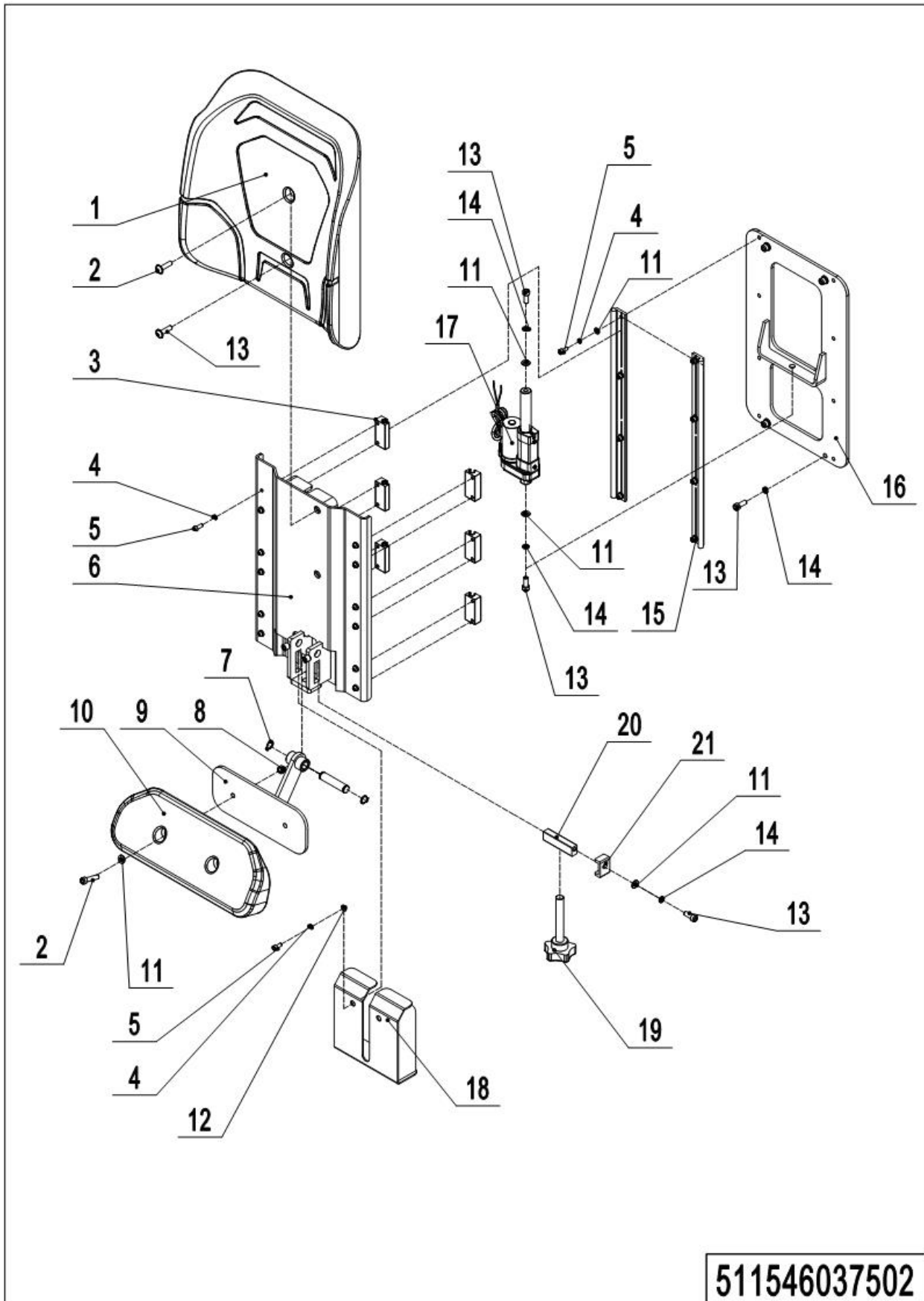
No.	Item Code	Mark	Item Description	Qty.	Substitute	Note
1	511538510007		Pull-arm	1		
2	511538510006		Plate	1		
3	511538520048		Pin	1		
4	511538520051		Pin	1		
5	910200200076		Screw M10x25	2		
6	910400500007		Spring Washer	2		
7	910400100007		Flat Washer	2		
8	511538520050		Pin	1		
9	511538520049		Spacer Bush	1		
10	511538520046		Lock Clip	1		
11	511538510005		Clamping Arm	1		
12	910300500005		Nut	2		
13	511538520047		Rubber Mat	2		
14	910200800013		Screw M6x16	2		
15	910300100005		Nut	2		
16	910401300002		Circlip	8		

07 Seat Assembly (Electrically Adjustable) (511546037501)

511546037501

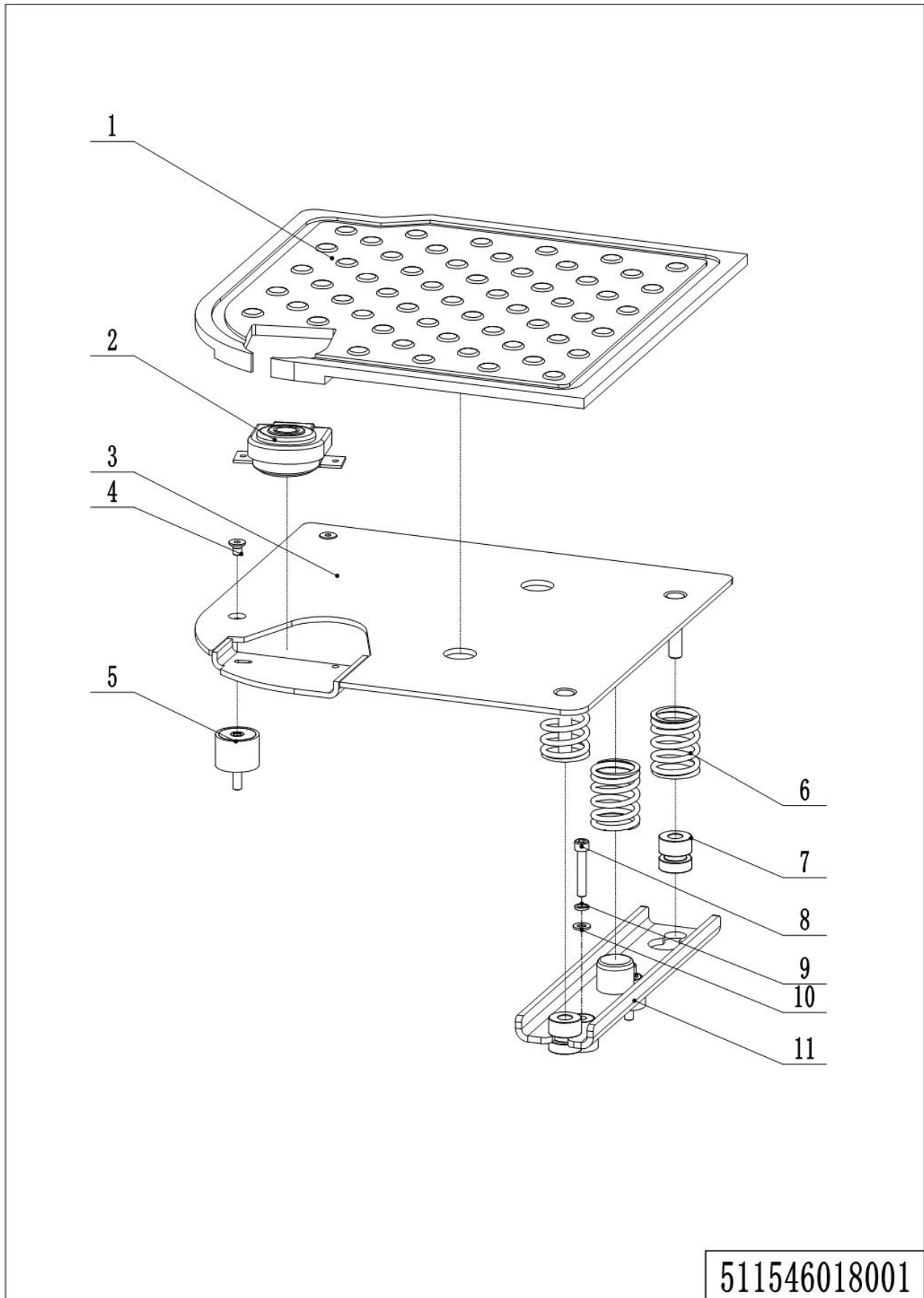
07 Seat Assembly (Electrically Adjustable) (511546037501)

No.	Item Code	Mark	Item Description	Qty.	Substitute	Note
1	511537520023		Backrest	1		
2	910200300059		Screw M8x35	3		
3	511537520014		Sliding Block	6		
4	910400500005		Spring Washer	21		
5	910200300018		Screw M6x16	18		
6	511537510002		Sliding Plate	1		
7	910401300006		Circlip	2		
8	910300500004		Nut	2		
9	511537510004		Adjusting Arm	1		
10	511537520020		Seat Cushion	1		
11	910400100006		Flat Washer	6		
12	910400100005		Flat Washer	9		
13	511537510003		Motor Cap	1		
14	511537520017		Motor	1		
15	910200200036		Screw M6x20	3		
16	511537520019		Adjusting Bolt	1		
17	910200200058		Screw M8x25	4		
18	910400500006		Spring Washer	10		
19	511537520016		Sliding Block	1		
20	511537520025		Bracket	1		
21	910200200057		Screw M8x20	8		
22	511537520013		Guide Rail	2		
23	511537510001		Baseboard	1		
24	511537520018		Electric Push Rod	1		
25	910202700006		Screw M8x20	2		

08 Seat Assembly (Manually Adjustable) (511546037502)

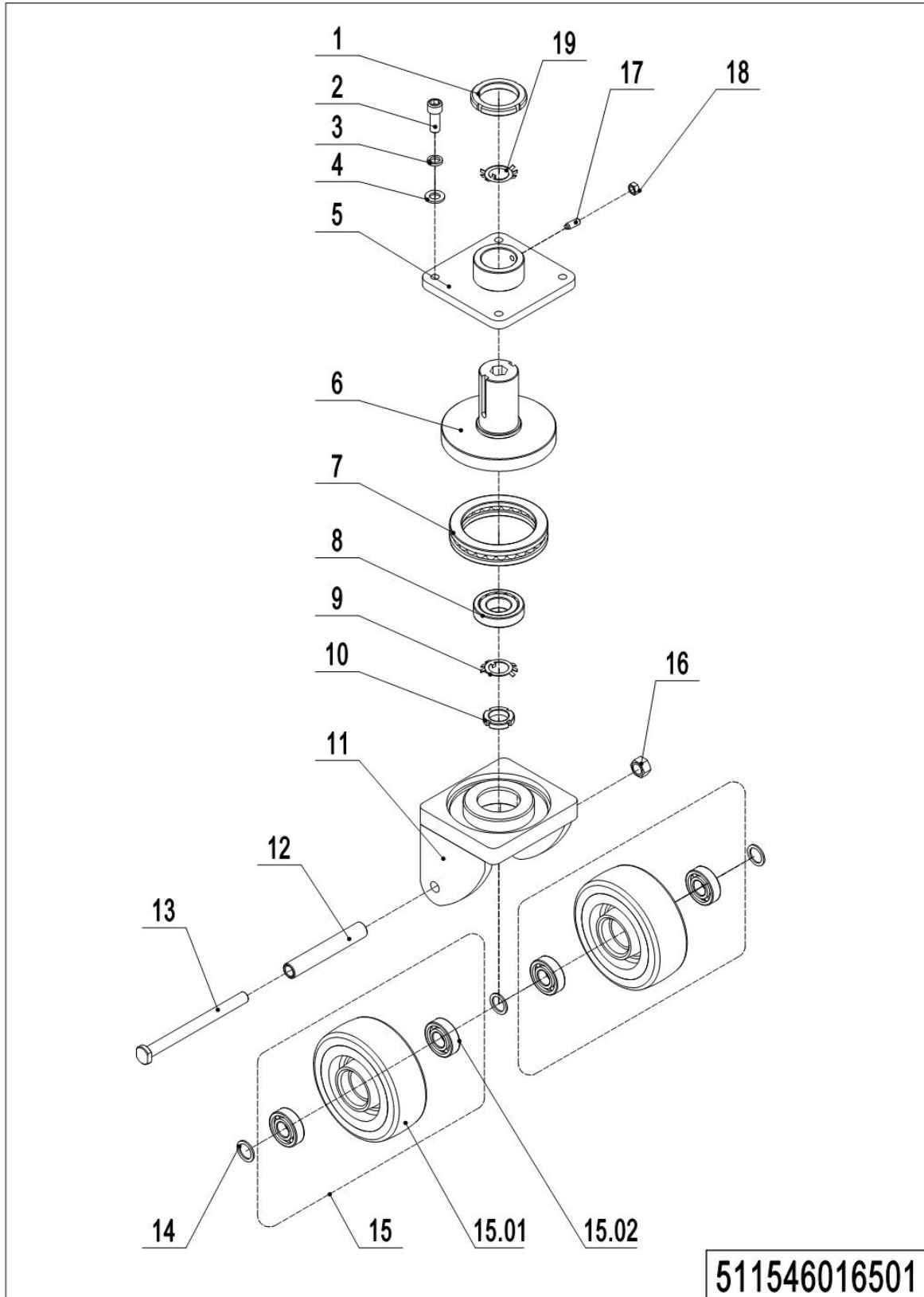
08 Seat Assembly (Manually Adjustable) (511546037502)

No.	Item Code	Mark	Item Description	Qty.	Substitute	Note
1	511537520023		Backrest	1		
2	910200300059		Screw M8x35	3		
3	511537520014		Sliding Block	6		
4	910400500005		Spring Washer	18		
5	910200300018		Screw M6x16	18		
6	511537510002		Sliding Plate	1		
7	910401300006		Circlip	2		
8	910300500004		Nut	2		
9	511537510004		Adjusting Arm	1		
10	511537520020		Seat Cushion	1		
11	910400100006		Flat Washer	6		
12	910400100005		Flat Washer	6		
13	910200200057		Screw M8x20	12		
14	910400500006		Spring Washer	10		
15	511537520013		Guide Rail	2		
16	511537510001		Baseboard	1		
17	511537520018		Electric Push Rod	1		
18	511537510005		Guard Cover	1		
19	911000300007		Handle	1		
20	511537520016		Sliding Block	1		
21	511537520029		Baffle	2		

09 Platform Assembly (511546018001)

09 Platform Assembly (511546018001)

No.	Item Code	Mark	Item Description	Qty.	Substitute	Note
1	511518020005		Platform Skin	1		
2	920201000008		Foot Switch	1		
3	511518010001		Platform	1		
4	910200400040		Screw M8x12	2		
5	511518020013		Absorber Φ 40x30	2		
6	940400500004		Spring	3		
7	566518020033		Crash Pad	2		
8	910200200062		Screw M8x45	2		
9	910400500006		Spring Washer	2		
10	910400100006		Flat Washer	2		
11	511518010002		Support Board	1		

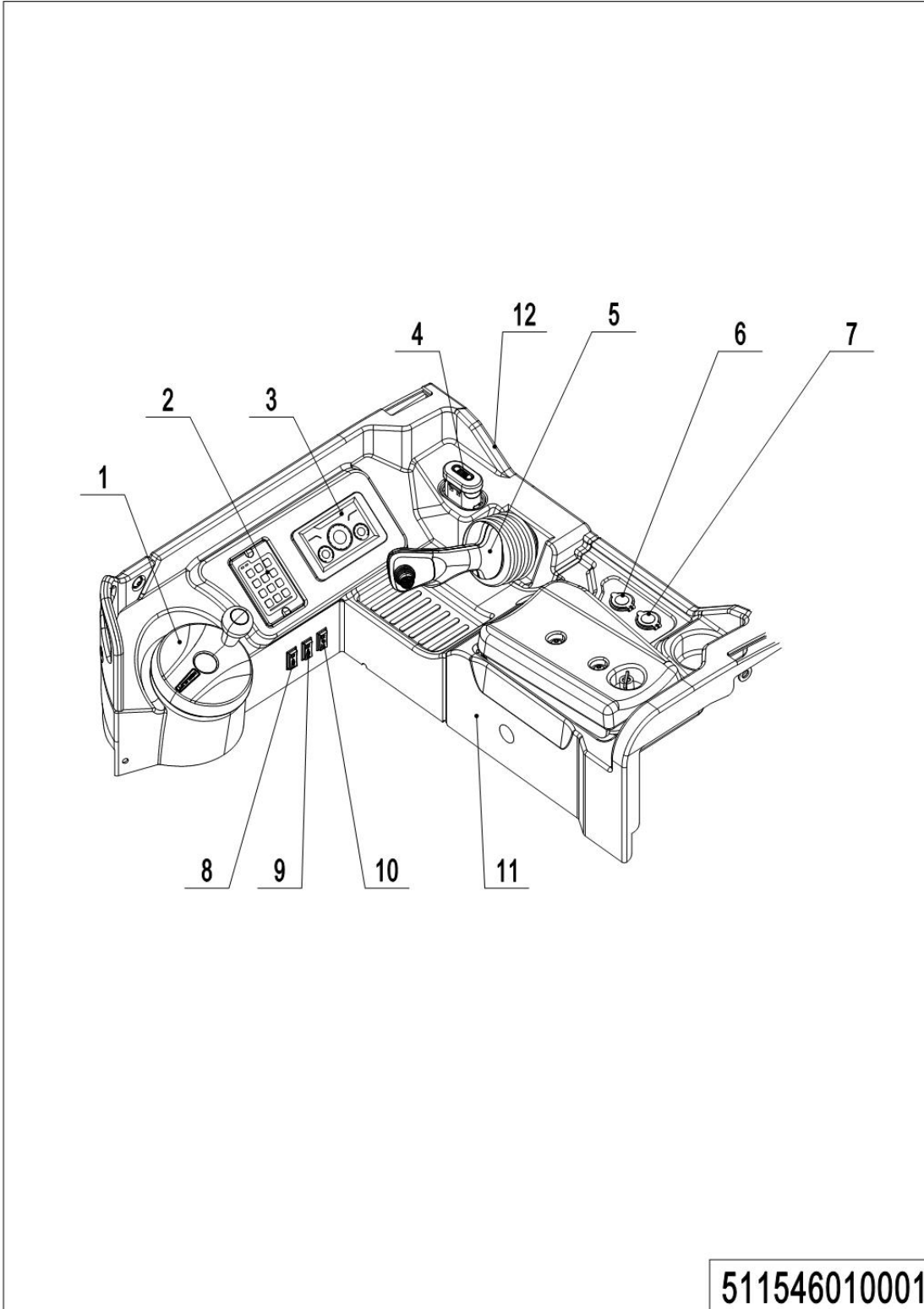
Chapter 4: Steering System, Brake, Wheels**01 Side Wheel (511546016501)**

01 Side Wheel (511546016501)

No.	Item Code	Mark	Item Description	Qty.	Substitute	Note
--	511516501001		Caster Assembly	1		
1	941100900004		Nut	1		
2	910400500008		Spring Washer	4		
3	910400500008		Spring Washer	4		
4	910400100008		Flat Washer	4		
5	511516510002		Bushing	1		
6	511516510001		Axle	1		
7	910700700003		Bearing	1		
8	910700600002		Bearing	1		
9	910400900004		Lock Washer	1		
10	910300700001		Nut	1		
11	511516510003		Wheel Carrier	1		
12	511516520007		Sleeve 20x126	1		
13	511516520008		Bolt M14x170	1		
14	940600500053		Washer	3		
15	511598510006		Wheel Kit	2		
15.01	940300300070		WheelΦ150x54	2		
15.02	910700200019		Bearing	4		
16	910300500007		Nut	1		
17	910201000012		Screw M8x20	1		
18	910300100006		Nut	1		
19	910400900017		Lock Washer	1		

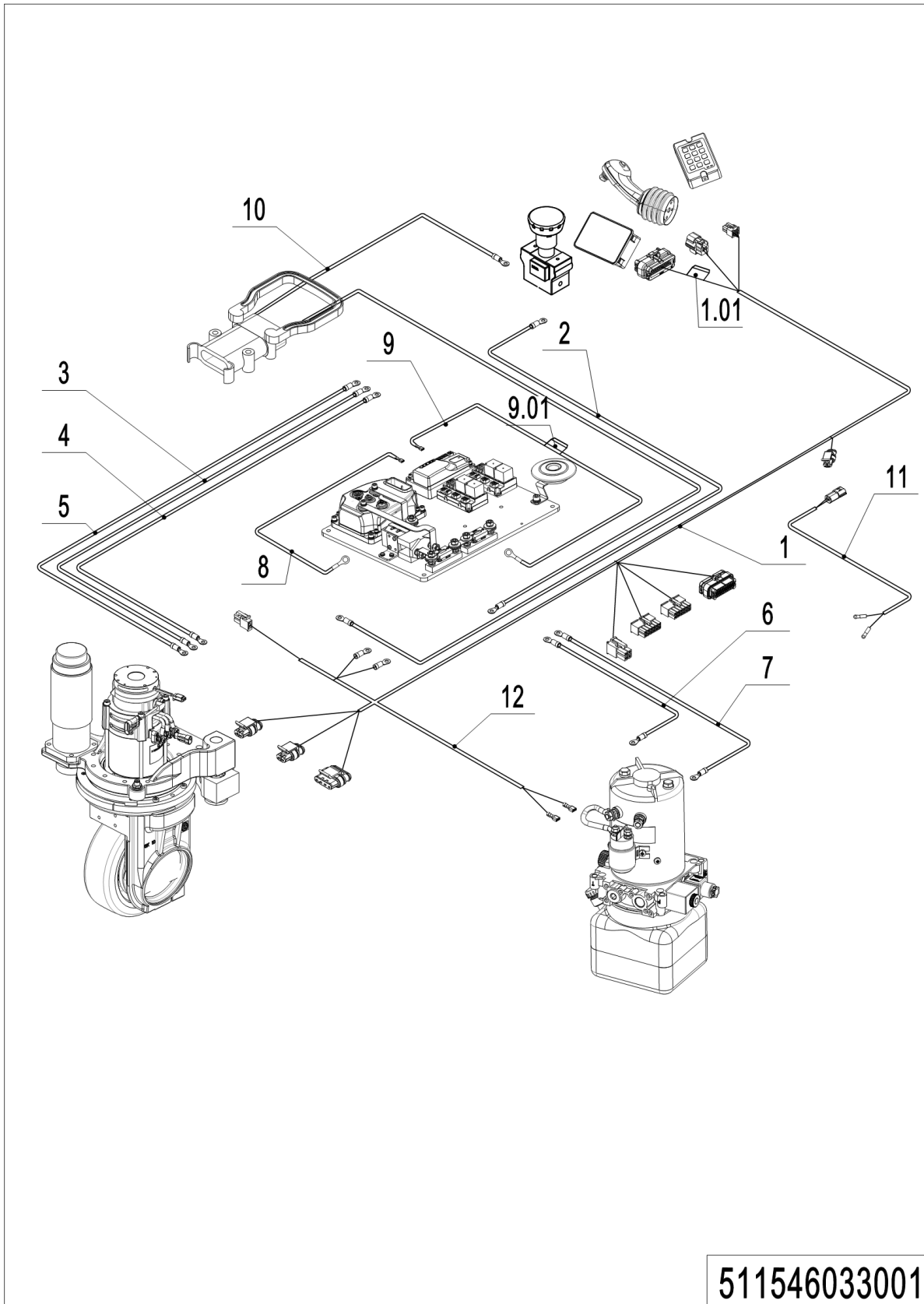
Chapter 5: Electrical Parts

01 Display Assembly (511546010001)



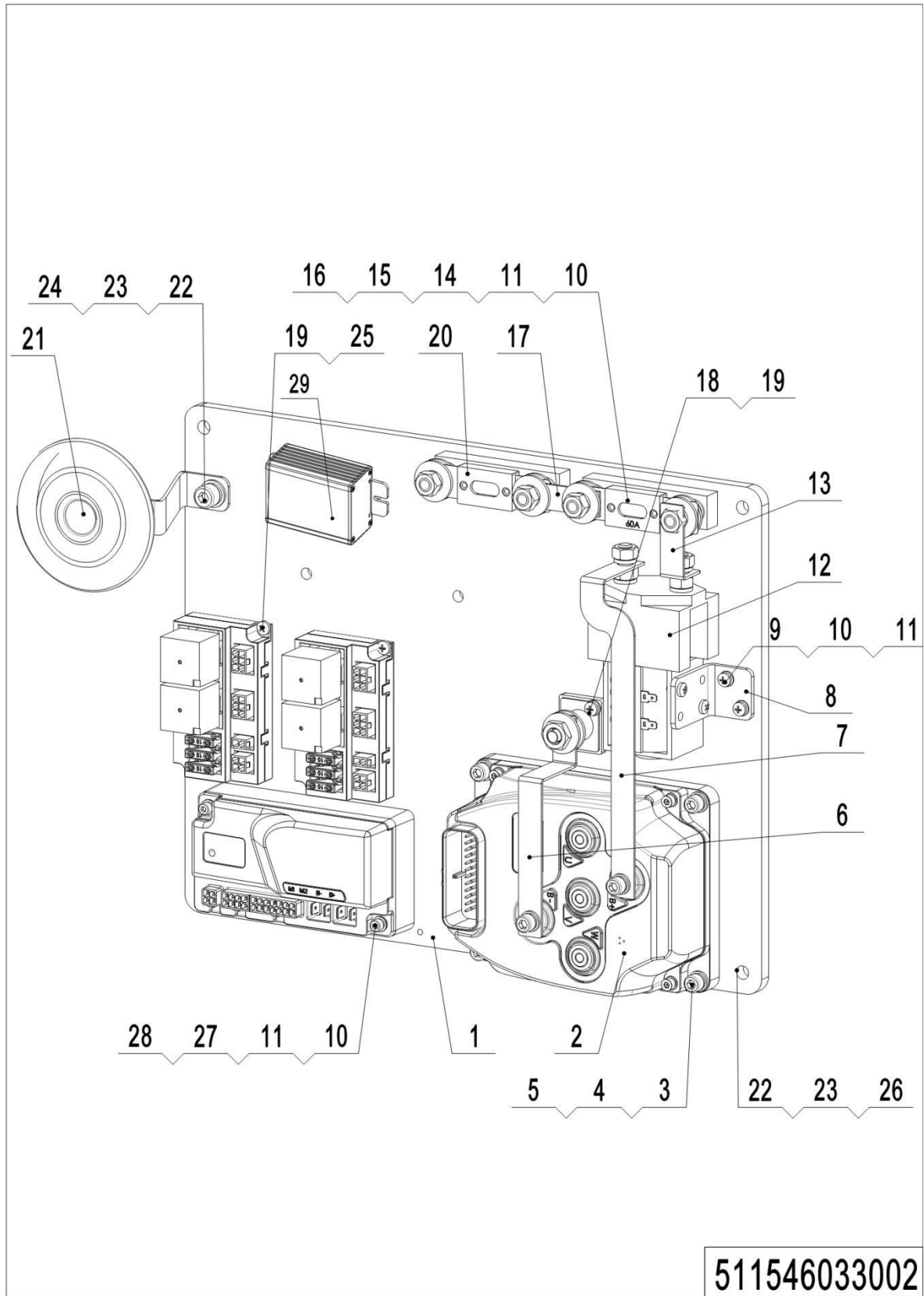
01 Display Assembly (511546010001)

No.	Item Code	M	Item Description	Qty.	Substitute	Note
1	940801700001		Handwheel	1		
2	920200200070		Coded Lock	1		
3	921100100148		Display	1		
4	920200100032		Emergency Button	1		
5	922100100196		Tiller	1		
6	921900100023		Converter	1		
7	921000200987		USB Charger	1		
8	920200800005		Rocker Switch	1		
9	920200800005		Rocker Switch	1		
10	920200800051		Rocker Switch	1		
11	511522520053		Dashboard	1		
12	511522520052		Dashboard	1		

02 Wire Harness (511546033001)

02 Wire Harness (511546033001)

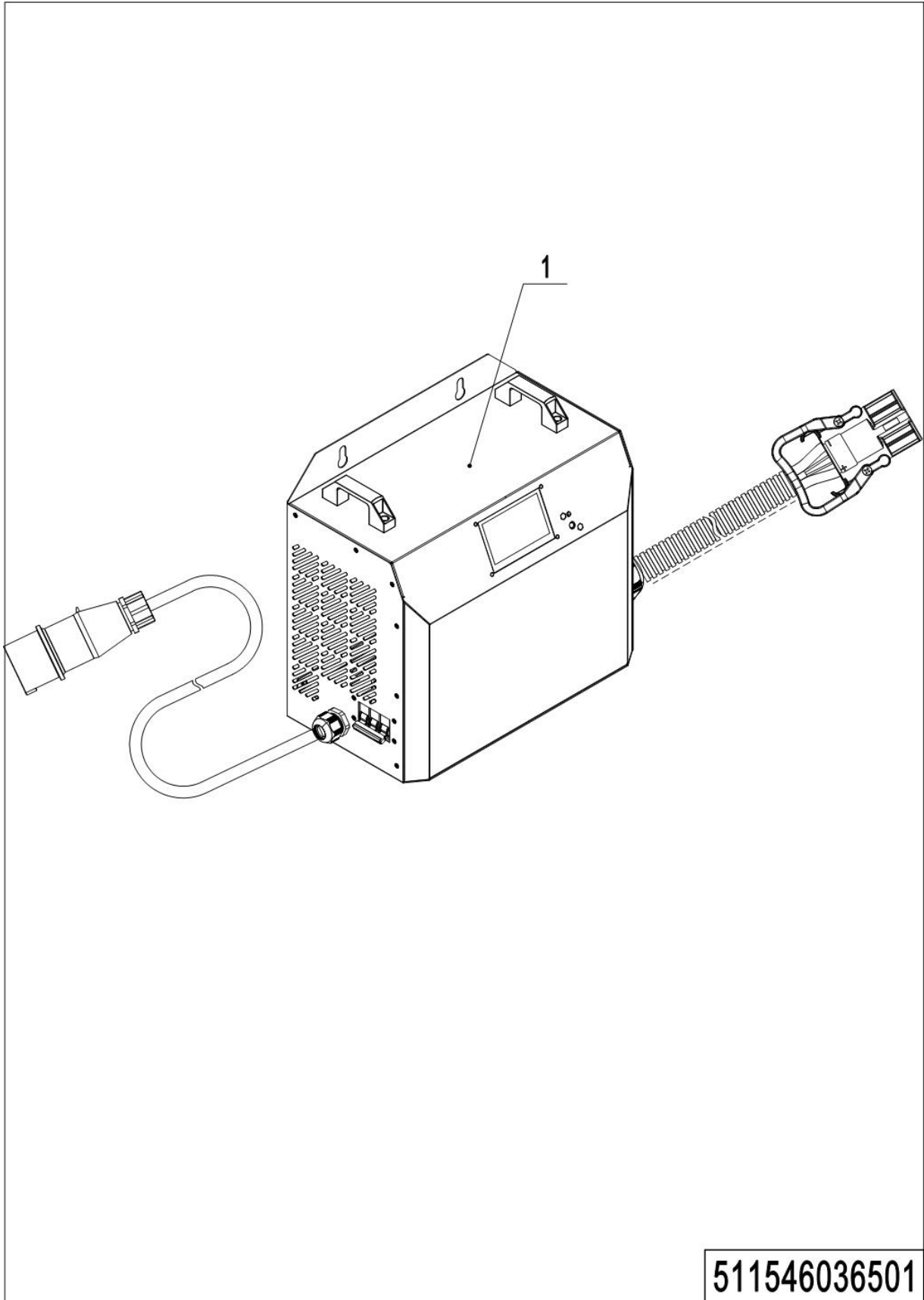
No.	Item Code	Mark	Item Description	Qty.	Substitute	Note
1	511533003002		Wiring Diagram	1		
1.01	920100300001		Fuse Tube	1		
2	511533010004		Cable	1		
3	511533010005		Cable	1		
4	511533010006		Cable	1		
5	511533010007		Cable	1		
6	511533010008		Cable	1		
7	511533010009		Cable	1		
8	511533010010		Cables	1		
9	511533010011		Wire Harness	1		
9.01	920100200013		Fuse	1		
10	511533010013		Fuse 30A	1		LAB
10	511533010012		Wire Harness	1		LiB
11	511533010018		Wire Harness	1		
12	511533010017		Wire Harness	1		

03 Controller Assembly (511546033002)

03 Controller Assembly (511546033002)

No.	Item Code	Mark	Item Description	Qty.	Substitute	Note
1	511533220000		Mounting Plate	1		
2	921400100240		Controller	1		
3	910200200036		Screw M6x20	6		
4	910400500005		Spring Washer	6		
5	910400100005		Flat Washer	6		
6	511533220002		Copper Busbar	1		
7	511533220002		Copper Busbar	1		
8	921300400005		Holder	1		
9	910200500034		Screw M4x8	4		
10	910400500003		Spring Washer	10		
11	910400100003		Flat Washer	10		
12	920700100002		Contacto	1		
13	511533220003		Copper Busbar	1		
14	910200500024		Screw M4x16	4		
15	920100400002		Fuse Holder	2		
16	920100100024		Fuse	1		
17	505633020003		Copper Busbar	1		
18	920100400001		Fuse Holder	1		
19	910200500022		Screw M4x12	5		
20	920100100004		Fuse	1		
21	920500100001		Horn	1		
22	910400500006		Spring Washer	5		
23	910400100006		Flat Washer	5		
24	910200200053		Screw M8x12	1		
25	921200100078		Relay	2		
25.01	920100200002		Fuse	6		
26	910200200055		Screw M8x16	4		
27	921400100241		Controller	1		
28	910200500029		Screw M4x35	2		
29	921200100088		Module MC0030A	1		

04 Charger (511546036501)

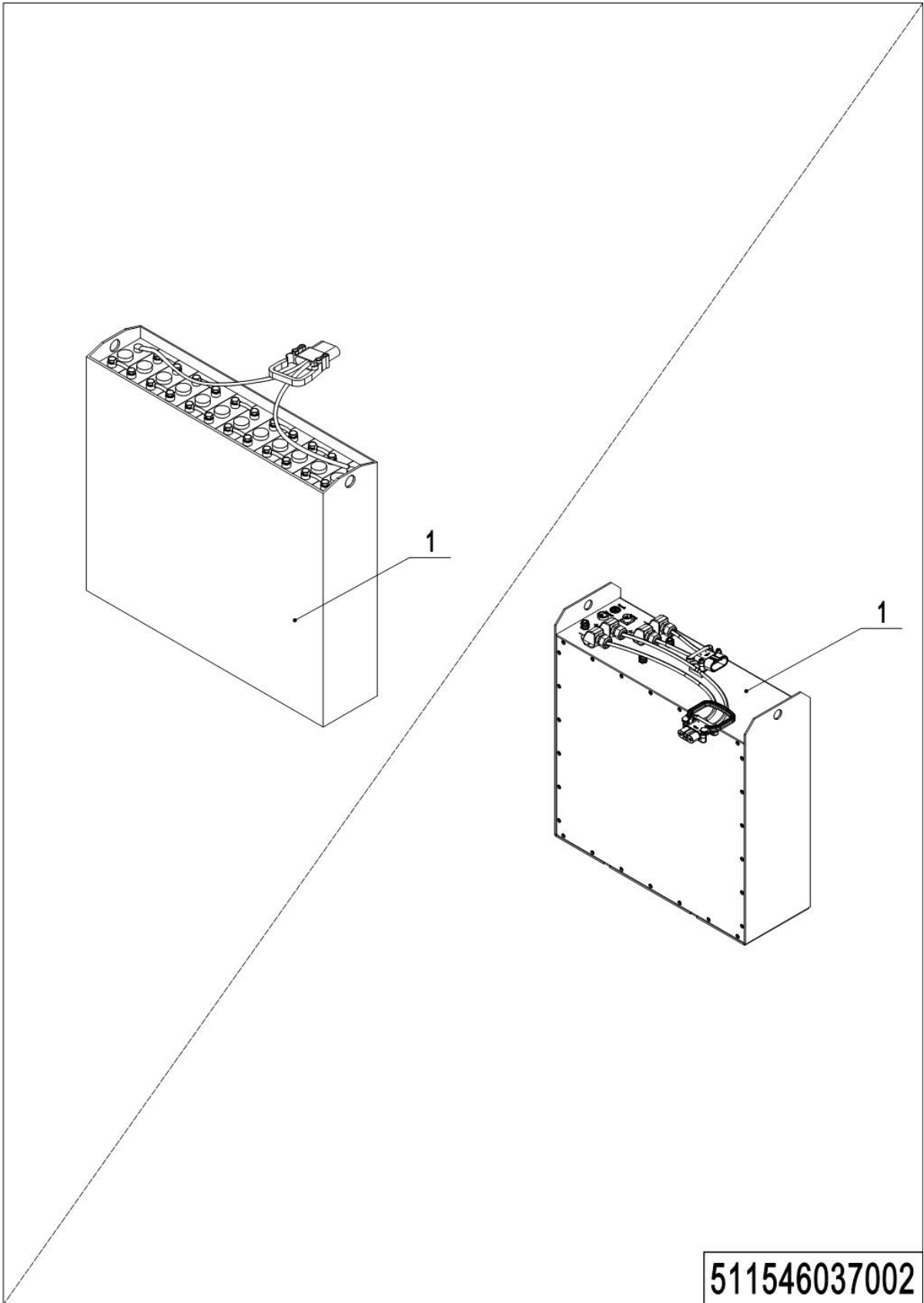


511546036501

04 Charger (511546036501)

No.	Item Code	Mark	Item Description	Qty.	Substitute	Note
1	921000200972		Charger 24V80A (EU)	1		
1	921000200991		Li-Charger 48V150A (EU)	1		
1	921000200993		Li-Charger 48V150A (EU)	1		
1	921000200992		Li-Charger 24V150A (Aisa)	1		
1	921000200990		Li-Charger 24V150A (Aisa)	1		

05 Traction Battery (511546037002)



05 Traction Battery (511546037002)

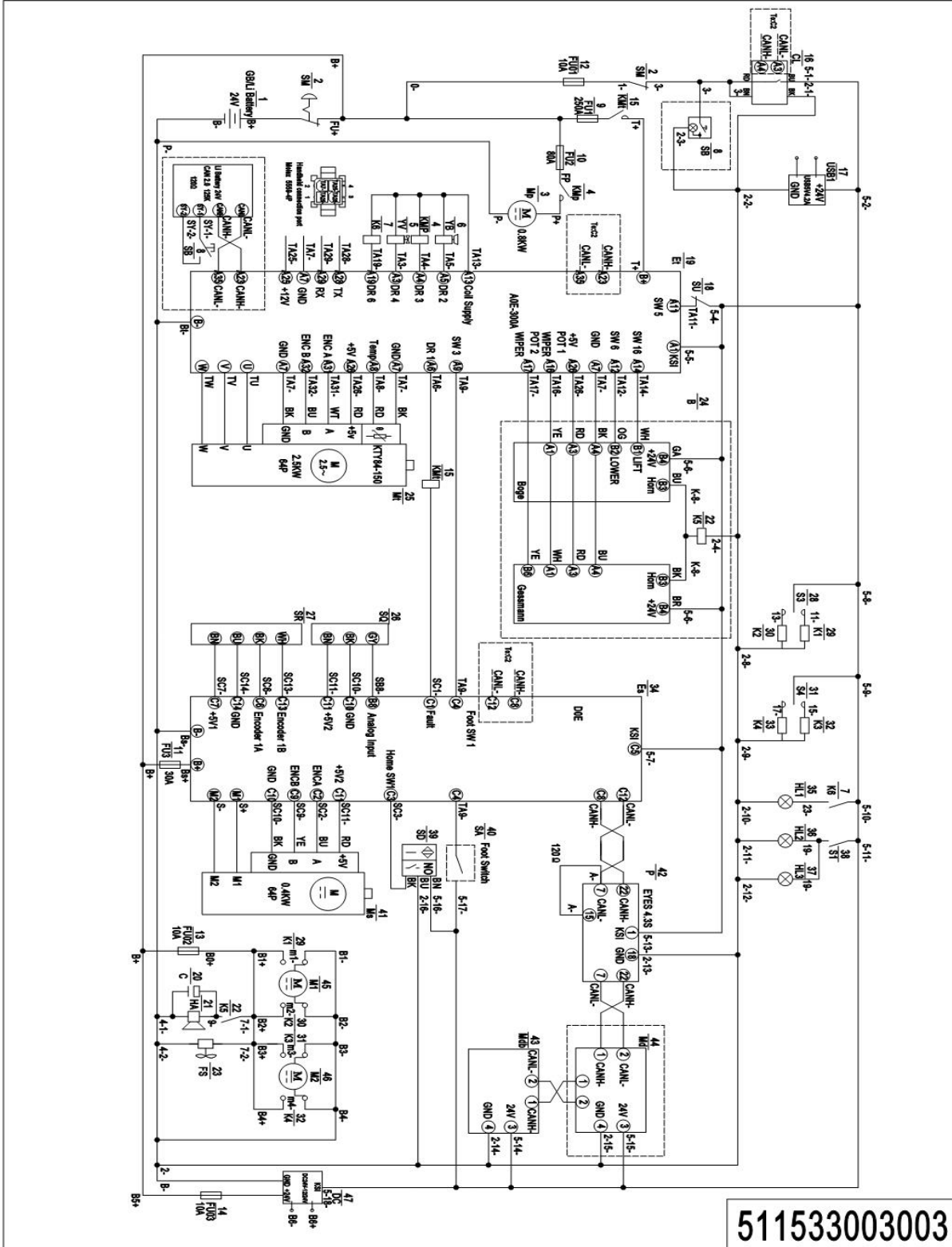
No.	Item Code	Mar	Item Description	Qty.	Substitute	Note
1	511502037001		Battery 24V	1		
1	920600100730		Li-Battery24V300Ah	1		

01 Labels and Decals (Neutral) (511546047001)

No.	Item Code	Mark	Item Description	Qty.	Substitute	Note
1	941200300001		Label	2		
2	941200300003		Label	1		
3	941200500001		Label	2		
4	941200200010		Label	1		
5	941200300002		Label	1		
6	511547020002		Identification Plate	1		PRS-200
7	511547020001		Label	1		PRS-200

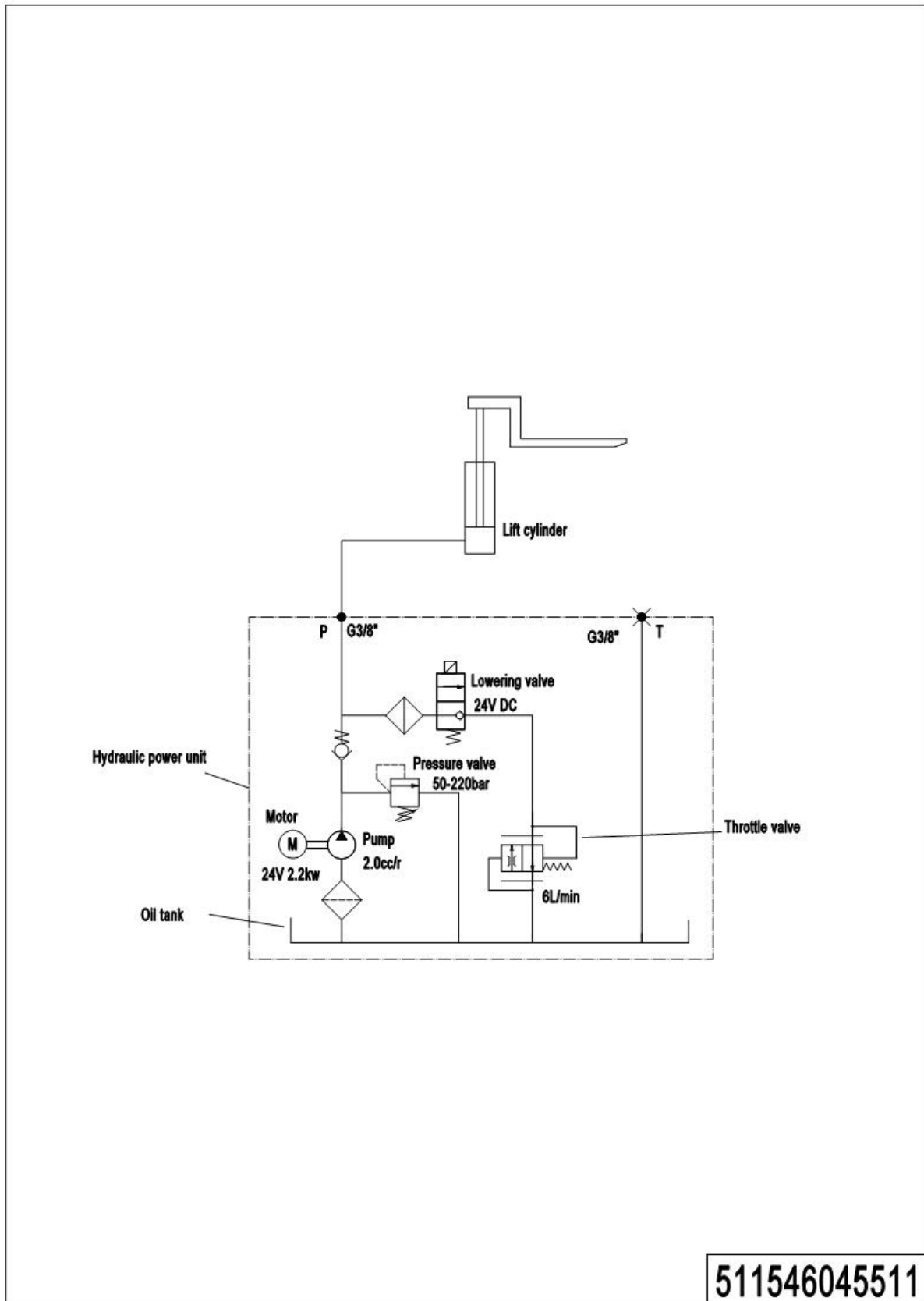
Appendix

01 Electrical Diagram for PRS-200 Curtis(511533003003)



511533003003

02 Hydraulic Diagram (511546045511)



511546045511

03 Consumable Parts List

No.	Item Code	Item Description	Qty.	Chapter/ Section/ Number
1	961001500014	Drive Wheel	1	Chapter 1/02/9
2	505798510001	Seal Kit	1	Chapter 2/01/5.02
3	940300300059	WheelΦ82x70	4	Chapter 3/03/36
4	940300300070	WheelΦ150x54	2	Chapter 4/01/15.02
5	920100300001	Fuse Tube	1	Chapter 5/02/1.01
6	920100200013	Fuse	1	Chapter 5/02/9.01
7	920100100024	Fuse	1	Chapter 5/03/16
8	920100100004	Fuse	1	Chapter 5/03/20
9	920100200002	Fuse	1	Chapter 5/03/25.01